

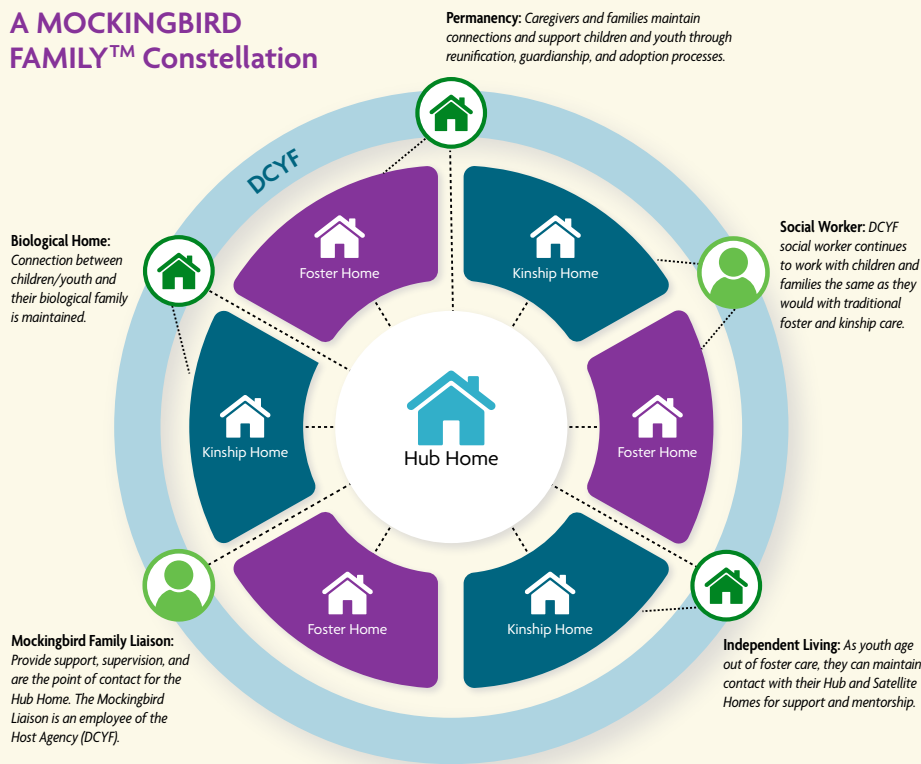
Join Mockingbird Family™

A program that brings together foster and kinship families through small communities that support caregivers and young people experiencing foster care.

How it works:

MOCKINGBIRD FAMILY™ includes six to 10 foster or kinship families connected to an experienced caregiver known as the “Hub Home” forming a “constellation.” Constellations are like an extended family, they are there to help with all parts of care for youth and families and to build community supports and resources.

A MOCKINGBIRD FAMILY™ Constellation



Washington State Department of
CHILDREN, YOUTH & FAMILIES



Benefits

- Access to respite, training, mentoring, and community resources
- Monthly gatherings and social events
- Increased connections for caregivers, youth, and families
- More opportunities for sibling visits and reunification support
- Normalizing experiences for youth

Hub Home Qualifications and Responsibilities

- Licensed foster parent for a minimum of two youth, ages birth to 18
- Maintain two open beds for respite
- Host monthly gatherings
- Provide support and system navigation to homes in the “constellation” also called Satellite Homes
- Experience working with young people who previously or currently qualify for intensive resources and support (ex. Behavioral Rehabilitation Services (BRS) or Wraparound with Intensive Services WISE).
- Monthly payments for Hub Homes



Learn more about Mockingbird Family and ways to participate.



Scan the QR code or go to:

<https://dcyf.wa.gov/services/foster-parenting/mockingbird-family>

If you would like free copies of this publication in an alternative format or language, please contact DCYF Constituent Relations at 1-800-723-4831 or email communications@dcyf.wa.gov.

DCYF PUBLICATION PPS_0102 (04-2025)