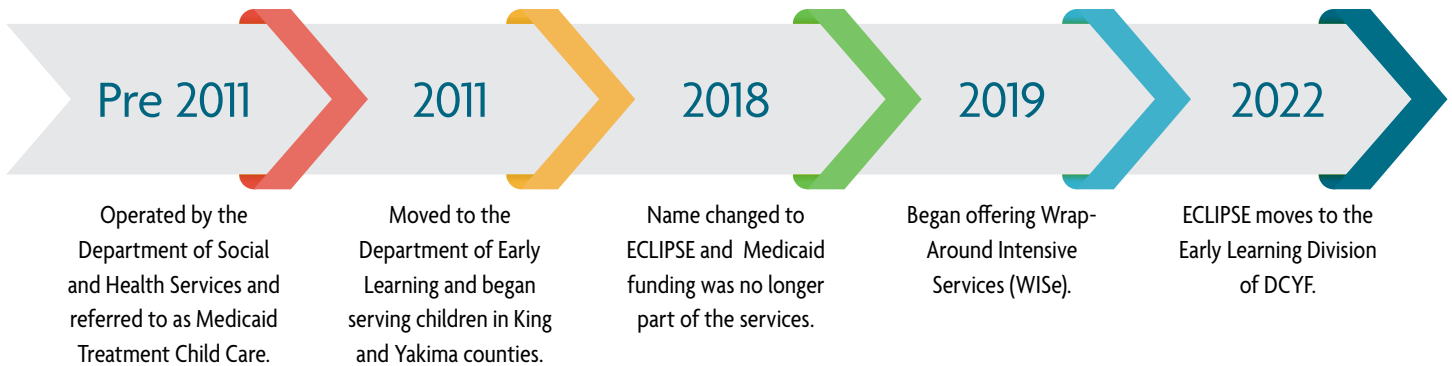


ECLIPSE History

Early Childhood Intervention Prevention Services (ECLIPSE) is an intervention and treatment service for children birth to 5 years old. It is for children and families who interface with multiple systems and have experienced toxic stress because of biological, familial, and environmental risk factors.



ECLIPSE TIMELINE



ECLIPSE was previously referred to as Medicaid Treatment Child Care (MTCC). MTCC was administered by the Washington State Department of Social and Health Services (DSHS) for more than 20 years. In 2011, the legislature transitioned MTCC to the now-dissolved Department of Early Learning (DEL). DEL programs, including MTCC, became part of DCYF when the agency was created in 2017. MTCC was renamed ECLIPSE in 2018. At that time, ECLIPSE was in two counties.

In January 2022, ECLIPSE work transitioned to the Early Childhood Education and Assistance Program (ECEAP) within the Early Learning Division (ELD) at DCYF. The transition provides a unique opportunity to blend ECEAP's solid foundation of high-quality learning, development experiences, family support services, and health coordination with top-tiered therapeutic services offered by ECLIPSE contractors. Through the work with ECEAP contractors and ECLIPSE funding, services have expanded in Pierce, Snohomish, Ferry, Chelan, Douglas, Pacific, Clark, Klickitat, Spokane, Adams, Benton, Franklin, Grant, Walla Walla, and Stevens counties.

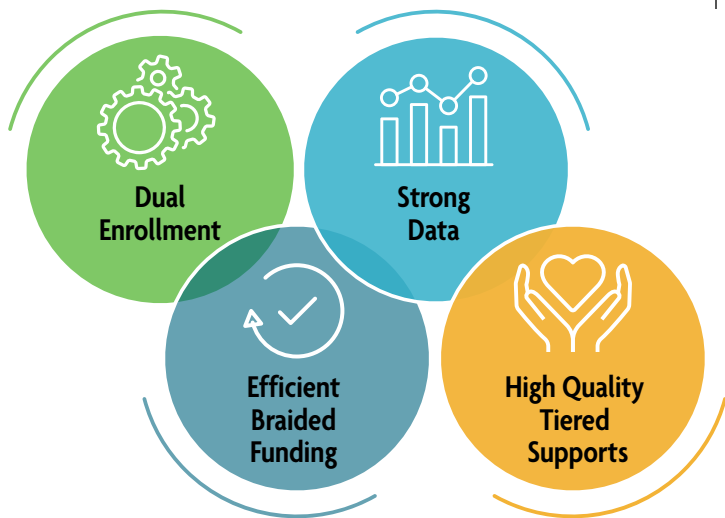


Washington State Department of
CHILDREN, YOUTH & FAMILIES

With the transition to ECEAP, an integrated approach is a priority. This includes:

- **DUAL ENROLLMENT:** ECEAP high quality comprehensive early learning model will be paired with ECLIPSE mental health supports and expanded to additional sites using data on critical mental health needs.
- **EFFICIENT BRAIDED FUNDING:** ECEAP and ECLIPSE funds will be stacked in a braided structure to meet the therapeutic needs of children and families.
- **STRONG DATA:** ECLIPSE will plan for integration into the Early Learning Management System (ELMS), which houses administrative data and assessments to meet outcomes-based behavioral requirements.
- **HIGH QUALITY TIERED SUPPORTS:** Child and family interventions and classroom adaptations will be analyzed for quality and effectiveness for the ECLIPSE population.

Dual enrollment and tiered support ensure high quality care and therapeutic intervention services in the same setting. ECEAP funding provides the base layer of quality experiences, staffing, and facilities costs. ECLIPSE funding provides top-tier therapeutic treatment services.



Key Activities for 2023-2024

- Expanded ECLIPSE access to 11 ECEAP programs, serving 17 counties.
- Served a total of 379 children. Of those served:
 - 46% were BIPOC and 12% were Tribal children
 - 65% were male and 35% female
 - 33% were dual language learners (18 different languages)
 - 70% had Individual Care Plans
- Integrated the ECLIPSE Request for Application (RFA) into the annual ECEAP RFA.
- Developed and approved the charter to build an ECLIPSE module in ELMS. ELMS is the Early Learning Management System (ELMS) for ECEAP, a web-based database built to support the ECEAP Performance Standards and collect information for monitoring and reporting.
- Updated and published new webpages:
 - ECLIPSE Overview: <https://www.dcyf.wa.gov/services/early-learning-providers/eceap/eclipse/information-resources>
 - Services: <https://www.dcyf.wa.gov/services/early-learning-providers/eceap/eclipse/services>
 - Expansion and Providers: <https://www.dcyf.wa.gov/services/early-learning-providers/eceap/eclipse/expansion-providers>
 - Information and Resources: <https://www.dcyf.wa.gov/services/early-learning-providers/eceap/eclipse/information-resources>
- Updated the ECLIPSE Minimum Service Delivery Requirements for 2024-2025: <https://www.dcyf.wa.gov/sites/default/files/pdf/eceap/2024-25-Minimum-Service-Delivery-Requirements-for-ECLIPSE.pdf>
- Developed an ECLIPSE monitoring system for ECLIPSE Contractors.
- Contracted with three organizations serving specific BIPOC populations and one tribal contractor.

CONTACT

For more about ECLIPSE, please visit <https://dcyf.wa.gov/services/early-learning-providers/eceap/eclipse> or email dcyf.eceap@dcyf.wa.gov.