



Family
Reconciliation
Services
(Angangen
Aninisin
Achufengenin
Family Kena)

*Keeping Families
Together (Isenifengeni
Family Kena)*



Family Reconciliation Services (Angangen Aninisin Achufengenin Family Kena)

Family Reconciliation Services (Angangen Aninisin Achufengenin Family Kena, FRS) a kan ew program mei voluntery ina a kan anisi kukun semirit me pwan family kena ir ra nom non afitikoko, ina epwene amwenino ngeni emon kukun semirit epwene suseni imwen, ese tapwei annukun non imw kena, wuunungawen safeingaw ika pwan ekkoch nonineng kena me non ewe family. Ewe atotongeni ren FRS a kan ren an epwe tumunu, apechakunano, achufengeni family kena me pwan pinei iseisewowun nukun imw ren kukun semirit.



Ewe program:

- Anisi kukun semirit kena, ier 12 tori 17.
- Kuuta an epwe forata sineier kena me pwan aninis kena me non family kena ren ar repwe for ngeni osupwang kena ra riri ngeni kukun semirit kena ra nom non ngawenon, semirit non mochenin ren aninis kena ika afitikokon family.
- Tumunu me pwan apechakunano ewe mwichen family.

Sam me in kena ika kukun semirit repwene tungor FRS seni ar kori central intake non 1-866-363-4276. Emon chon tumun, caseworker seni mwichen Indian, caseworker seni DCYF, chon apechakuna annuk, HOPE Center, Crisis Residential Center (CRC) ika nenien tumunun kukun semirit nepwin repwene pwan koko fan iten ewe kukun semirit ika sam me in ren ar repwe tungor aninis kena.

Emon caseworker epwene kori ewe family me non 24 awa ren assignmenin case, ese pachenong weekends kena me pwan holidays ken, ren an epwe ateteni ew kapaseis fengen me pwan chechekin. Ewe caseworker, kukun semirit me pwan family repwene kakapas fengen usun ewe afitikoko non ei attun me pwan ekkewe nenien angaiin aninis kena ina repwene kaworeno ngeni foforon ar sakono kena.

Aninis kena ra kan forita ren ar repwe achufengeni ewe kukun semirit me pwan sam me in kena. Aninis kena epwene pachenong nge esapw awukuk ngeni:

- Chechekin Family
- Mwochomwochen aninisin foforinongen non family kena
- Atotono kena ren tumunun safeien wuunungawen safeingaw me/ika counseling
- Atotono kena ren aninisin semwenin non mekur kena repwene apachanong Wraparound with Intensive Services (WISe) ika pwe mei tufich
- Aninis fiti filin echo taropwen angingin At-Risk Youth (Kukun Semirit Non Ngaweno, ARY) ika Child in Need of Services (Semirit non Mochenin ren Aninis kena, CHINS) nupwen ra tungoreno

Fin kena ren Kukun Semirit me pwan Sam me In kena.

Chechekin Family

Ewe chechekin family epwene ioni poraus ren ar repwe angei ew napapenon ar weweiti ren an ew family pechakun kena, mochenin me pwan nenien angaiin aninis kena me pwan ar angaweno won ewe afitikokon family non ei attun. Checheki kena ra kan awasnino seni non angang fengenin fiti ekkewe sam me in me pwan kukun semirit ren ar repwe aitata nenien angaiin aninis kena non nenien nonom me/ika angangen aninisin DCYF kena ren an epwe anisi ewe akisinon ren afitikokon family me pwan tumunun ewe mwichen family. Atotono kena ngeni nenien angaiin aninis kena repwene pachenong mwochomwochen aninisin foforinongen non family kena, chechekin wuunungawen safeingaw, aninisin semwenin non mekur me pwan WISE.





At-Risk Youth (Kukun Semirit Non Ngaweno, ARY)

Annukun Washington state a aweweni At-Risk Youth (Kukun Semirit Non Ngaweno, ARY) pwe emon semirit:

- (a) Ina ii ese kan nom non imwen ren esapw mwoch seni 72 teteninon awa nge ese wor mumutan seni semen me inen ewe kukun semirit kewe.
- (b) Ina ii a kan fokkun napeno seni ewe nemenemen semen me inen ewe kukun semirit kewe nge ina napenapen ewe kukun semirit a kan afeiengaw ngeni pechakunen, tumunun ika unusen pechakunen ewe kukun semirit ika ekkena pwan ekkoch aramas; ika
- (c) Ina ii a wor an osupwangen wuungawen safeingaw ren ena ese kan wor witiwitin atipisin katan annuk ra riri ngeni wuungawen safeingaw.

Ew chechekin family epwene kan awasino me mwan filin ewe taropwen angingin ARY. Ei taropwen angingi a kan mut ngeni ewe sam me in ika chon tumun seni annuk ren ar repwe sopweino ar iseisen tumun ren nour kukun semirit nupwen ra kan kuut an ewe kapungun kukun semirit we aninis seni foritan eochun sakkun kena ina ewe kukun semirit epwene kan tapwei. Ei meni epwene pachenong mochenin pwe ewe kukun semirit epwene foforinong non ew programen asukun, tapwei annukun family kena me pwan fiti aninisin counseling kena. Ewe kapung epwene ordereni pwe ewe sam me in epwene fitinong non counseling ika pwan ekkoch aninis kena nupwen a mut ngenir ewe ARY. Ewe sam me in epwene kan wisen ren monien momo kena ra riri ngeni ewe akoten orderin kapung.

Child in Need of Services (Semirit non Mochenin ren Aninis kena, CHINS)

Nupwen non counseling, nonom fiti aramasen kena ika achocho kena mei wewengeni rese kan fichino ngeni foforon afitikokon nefinen emon kukun semirit me pwan semer me iner kena me pwan ewe kukun semirit epwene kan mochen an epwe iseisewow me nukun imwen ewe family, iwe ewe kukun semirit ika sam me in epwene fileni ew taropwen angingin CHINS.

Annukun Washington state a kan aweweni emon Semirit non Mochenin ren Aninis kena pwe emon semirit:

- (a) Ina ii a kan fokkun napeno seni ewe nemenemen semen me inen ewe kukun semirit kewe nge ina napenapen ewe kukun semirit a kan afeiengaw ngeni pechakunen, tumunun ika unusen pechakunen ewe kukun semirit ika pwan ekkoch aramas;
 - (b) Ina ii a kan repotino ngeni chon apechakuna annuk pwe emon ese kan nom nge ese wor mumutan ren esapw mwoch seni 24 teteninon awa won ruwow ika chomongenon eimoun fansoun kena seni ewe imwen emon ika pwan emon sam me in, ew CRC, ew iseisewow me nukun imw ika ew isiesewow a ordereno seni kapung; me pwan
 - (i) A kan apwarano ew fokkun ngawen osupwangen wuunungawen safeingaw; ika
 - (ii) A kan apwarano napenapen kena ina a forata ew fokkun ngawen ren afeiengaw ngeni ewe pechakunen, tumunun ika wunusen pechakunen ren ewe semirit ika ekkena pwan ekkoch aramas; ika
 - (c) (i) Ina ii A Kan Non Mochenin ren:
 - A. Aninis kena mei namot mei pachenong mongo, nenien tumun, tumunun safei, wuuf ika sukun; ika
 - B. Aninis kena ra forita ren ar repwe tumunu ika achufengeni ewe family;
 - (ii) Ina ii ese kan wor an atotongeni ika ese kan mochen an epwe anamota ekkei aninis; me pwan
 - (iii) Ina semen me inen kewe ra kan angei pwaratan sopwesopwenon nge achocho kena rese kan tufichino ar repwe tumunu ewe kawuun family ika rese tongeni ika rese mochen sopwesopweino achocho kena ren ar repwe tumunu ewe kawuun family; ika
- (d) Ina ii a kan emon "semirit a kan tumungaweno non nisou."



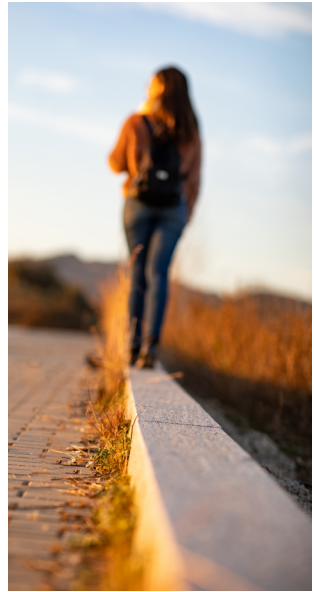
Sam me in kena repwene fileni echo taropwen angingin CHINS nupwen sakkun kena usun ewe kukun semirit a kan maakewow non ewe awewen me asan ra kan wor. Ewe kukun semirit ika ewe caseworker seni DCYF epwene fileni echo taropwen angingin CHINS ika ew seni ekkewe sakkun kena me asan ra wor, akaewin ika pwe ewe sam me in esapw mut ngeni ewe kukun semirit an epwe nonom non imwen ekkewe sam me in we me pwan esapw ika ese tongeni an epwe ateteni pwan ew neni ren an ewe kukun semirit epwe nom ie.

Ewe aramas a fileni ewe taropwen angingi epwene kan pwarano pwe ir ra kan fen satuni ar repwe foforano ewe afitikoko, meinisin eochun asiwinin kena ra kan fen awasireno me pwan a kan eochuno ren ewe kukun semirit an epwe nonom me nukun ewe imw nupwen ewe family a sopwesopweno ne angang ngeni ew foforinon. Ew chechekin family fiti emon caseworker seni DCYF epwene kan awasino me mwan filin ewe taropwen angingin CHINS.

Ika pwe ewe kapung a apungano ewe iseisewowun nukun imw, iwe iteiten ewe kukun semirit epwene nom ren emon aramasen ika emon chiechien ewe family. DCYF a kan amweni ewe iseisewow me pwan ateteni ewe katowowun ren aninis kena ika chok pwe ewe semirit a kan iseisenong non ew imwen foster mei naisenino ika fiti emon aramasen ina ese kan pwan foforino an epwe naisenino. Ika pwe ewe kapung a isenanong ewe kukun semirit non ew esapw emon aramasen, imw ese naisenino, DCYF a kesipinano ewe case me pwan asinei ngeni ewe kapung ren ena fofor. Ekkewe sam me in ika DCYF epwene tungor asopwenon ren ewe CHINS foforun kapung ika pwe aninis kena rese tongeni ar repwene kaworeno pokiten:

- (a) Ewe kukun semirit ese kan fen fiti ewe iseisenong mei apunguno seni kapung ren 30 teteninon ran kena ika chomong seni;
- (b) Ekkewe sam me in ika ewe kukun semirit, ika meinisin ir, rese mochen ar repwe angangeochuno non kaworenon, fichinon foforinong a awenewen ngeni achufengenin ewe family; ika
- (c) DCYF a kan awasano meinisin nenien angaiin aninis kena mei kawor me pwan fichino ina epwene punguno non achufenginir.

Ewe kapung epwene afisi ew arongorongen chekin me non 90 ran ren ar repwe cheki won an ewe family we nape non foforun non achufengino. Ika pwe ewe kukun semirit ese tongeni niwin ngeni imwen nupwen ewe arongorongen cheki a fis, iwe ewe kukun semirit epwene chuen chok nom non iseisenong ren epwe tori onu maram. Ewe kapung epwene ordereni ekkewe sam me in ar repwe fitinong non aninis kena ren ar repwe anisi ne achufengeni ewe family non mutirin fansoun ra tongeni.





Nenien angei aninisin non nenien nonom kena

Angangen Aninisin Tumunun Safei kena

Ren ew atepwanepwanen afeiangawen menau, kori 9-1-1. Ren kuuten angangen aninisin semwenin napenap kena, kose mochen kori ewe Washington State Mental Health Referral Service non 1-833-303-5437 me pwan chungeni emon chon sineieochun atotonon. Semirit kena ra nafeno ngeni Medicaid me pwan kukun semirit tori ier 21 ir ra angei aweiresin mochenin napenaper kena repwene nafeno ren apachenongen aninis kena seni non ewe Wraparound with Intensive Services (WISe) program. WISe a tongeni kaworeno non ewe imw me pwan nenien nonom.

Ika pwe emon aramas a kan ekkieki pwe epwene nieno, iwe kose mochen kori ewe Suicide Prevention Life Line non 1-800-273-8255.

Ren poraus usun semwenin non mekur ika programen umwesin wuungawen safeingaw kena, ewe kukun semirit ika ekkewe sam me in ra tongeni kori ewe 24-Awa Washington Recovery Help Line non 1-866-789-1511. Ewe Help Line a awora ese wor epwe sinei me pwan amwonenon foforinongen non osukosuk me pwan atotonon aninis kena ren chon nom non Washington state kena.

Ren nonineng kena usun akawaten semirit me pwan tumunungaw ika ew Commercially Sexually Exploited Child (CSEC), kori 1-866-ENDHARM (1-866-363-4276).

Ika pwe en ka mochen kapii kena ren ei taropwe non ew asiwinin maaken ika fosun fonu, iwe kose mochen kori DCYF Constituent Relations (1-800-723-4831 | 360-902-8060, ConstRelations@dcyf.wa.gov).

DCYF PUBLICATION CWP_0037 | DSHS 22-448 CHK (03-2021) Chuukese