

Situational Overview: JR Institutions and Populations

December 2024

Presented to the Partnership Council on Juvenile Justice

Washington State Office of Financial Management



Public Safety Policy & Research Center

Juvenile Rehabilitation Facilities

2 Secure Facilities:

Echo Glen Children's Center (EGCC) Snoqualmie

- Males up to age 17
- All females up to age 25, including adult sentences
- Not suitable for higher security classification (e.g., no fence). Limited number of maximum security living units.
- Not currently over capacity (but close)
- Additional units opening soon (2025)

Green Hill School (GHS) Chehalis

- Older males (17-25)
- Medium/Maximum security
- Younger males requiring maximum security living facility
 - Currently over capacity
 - 2024 opened new unit
 - No additional units possible

Juvenile Rehabilitation Types of Sentences

3 Types of Sentences:

Juvenile Sentences

- Sentenced in juvenile court
- Subject to juvenile sentencing grid
- Under JR jurisdiction
- Will be released from JR
- Minimum and Maximum set by court. Release date set by JR (starts at minimum)
- Some no range, just straight time.

Adult Sentences

- “Declined” and sentenced in adult court
 - Subject to felony guideline grid
 - Under DOC jurisdiction (even in JR facilities)
- Court determines sentence, DOC determines release (good time)

Pre-25

- Release date prior to age 25.
- Will release from JR.

Post-25

- Release date after age 25.
- Will transfer to DOC at age 25.

Juvenile Rehabilitation Sentences Length

Juvenile Sentences

- Minimum and Maximum set by court.
Release date set by JR
- Starts at minimum – can be increased upon review by committee.
- Current population, 12% juvenile sentences at GHS have release dates above minimum sentence.

Adult Sentences

- Court determines sentence under guidelines
- DOC determines release date considering sentence and applicable earned time/good time
- DOC jurisdiction – so DOC determines infractions and sentence extensions

Juvenile Rehabilitation Community Options

Juvenile Sentences and Pre-25 Adult Sentences ONLY

Community Facilities (CF)

- 8 facilities across the state (Wenatchee, Lakewood, Ellensburg [males <18], Yakima [females], Ephrata, Olympia, Richland, Kirkland).
- Must serve 10% of their sentence or at least 30 days in secure facility
- Must be classified at Minimum Security Level

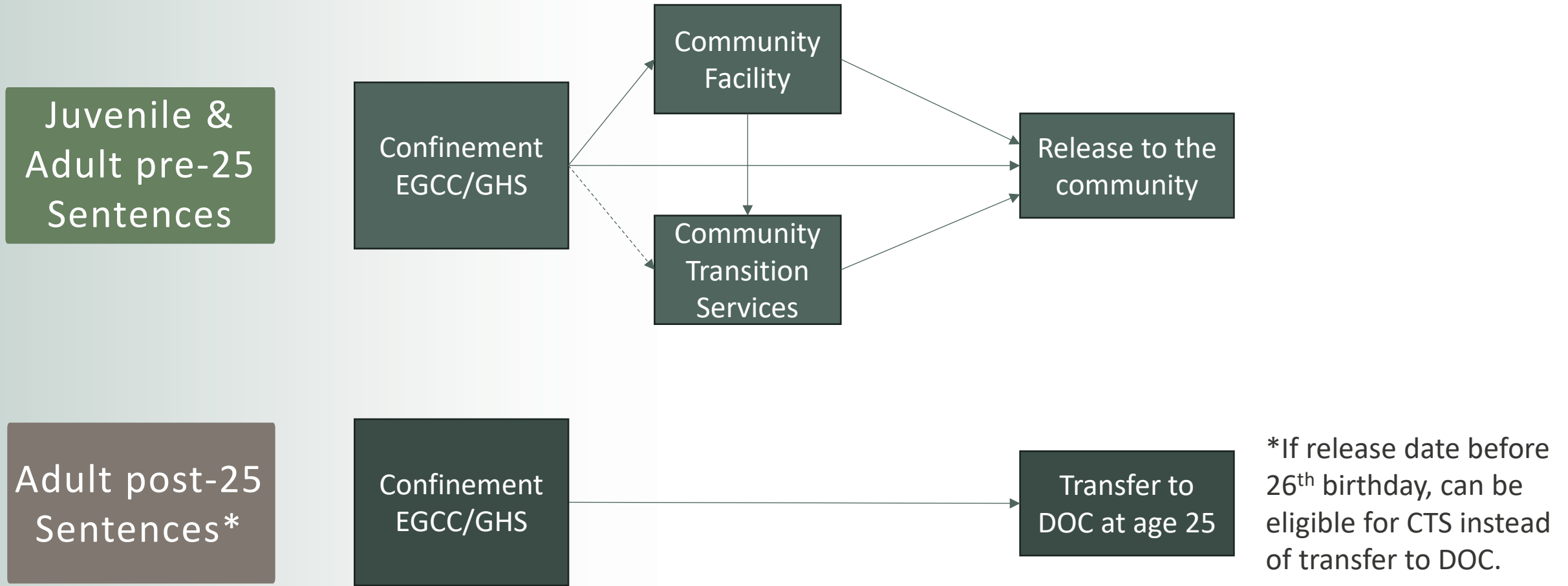
Community Transition Services (CTS)

- 24/7 Electronic monitoring while living outside of JR institution or CF
 - New program
- Must serve 60% of their minimum sentence (no less than 15 weeks) and be no more than 18 months from release date.
- Must be classified as Minimum Security Level

JR Community Options Detail

Item/Activity	Community Facility (CF)	Community Transition Services (CTS)
Community access	12-16 hours	12-16 hours
Electronic Monitoring	Not typically used	24/7 for duration of CTS
Driving a car	Not allowed, except for on home visits with family car	Allowed with valid insurance and driver's license
Cell phone use	Not allowed	Required (provided if needed)
Banking	Linked accounts	Oversight but not linked
Location of residence	At CF – expenses covered	Approved housing with supports for up to six months
Education expenses	Provided if not covered by FAFSA	Provided if not covered by FAFSA
Programming	Active involvement in school, work, treatment, etc.	Weekly 24/7 schedule required
Medical expenses	Provided if not covered by other insurance	Provided if not covered by other insurance
Authorized leaves (ALs)	Up to 30 days cumulative	ALs included in the 30 maximum (no out of state)
Whereabouts' verification in the community	In person by CF staff	GPS location and in person by regional staff
Substance Use	Not allowed	Not allowed
Unaccounted for time	Considered escape after one hour	Considered escape after one hour
Return privileges	Considered with limits	JR sentence, considered with limits; DOC sentence, considered with limits only if under age 25

JR Youth Movement



JR - Current population

Institution	Population 11/21	Safe Operational Capacity	Percent utilized
Green Hill School	235	180	130%
Echo Glen Children's Center	113	112	101%

Community Facilities	Population *10/02	Safe Operational Capacity	Percent utilized
Canyon View	7	14	50%
Oakridge	12	16	75%
Parke Creek	11	14	79%
Ridgeview	9	12	75%
Sunrise	10	14	71%
Touchstone	13	16	81%
Twin Rivers	12	16	75%
Woodinville	13	14	93%
Total	87	116	75%

JR – Population as of 11/30/2024

Breakdown of sentence type for youth in facilities			
	Juvenile	Pre-25	Post-25
Echo Glen CC	93%	7%	
Green Hill School	52%	16%	30%
Community facilities	80%	20%	

GHS Security Classifications

Breakdown of youth at GHS on *10/1/24 by Sentence type and Security Classification					
	Juvenile	Pre-25	25-26	Post-26	Row Total
Maximum Security Classification	26%	8%	7%	22%	63%
Medium Security Classification	29%	7%	0%	0%	37%
Minimum Security Classification	0%	1%	0%	0%	1%
Column Total	55%	16%	7%	22%	100%

*Minimum security classification required for CF/CTS

*Only Juv, pre-25 and 25-26 eligible for CF/CTS

Additional information from JR (Oct '24)

Adult Sentences:

Q: How many post-25 youth have ERD before 26 who could potentially be CTS eligible based only on release date?

- 16 youth at GHS with adult sentence and release date between 25 and 26. On average, group has about 1,200 days remaining on sentence with minimum being 389 and max being 2,481
- 4 of those ineligible because Murder charge

Juvenile Sentences:

Q: How many juvenile sentences at GHS are for non-violent/non-sex offenses?

- 13/230 GHS youth Most Serious Offense was not violent or sex. Include possession of firearm, possession of stolen vehicle, and burg 2, as examples.

Most Serious Offense

Green Hill School (11/30/24)	Number	Percent
Robbery	81	34%
Murder/Manslaughter	54	23%
Assault	40	17%
Burglary	22	9%
Rape/Rape of a Child	12	5%
Other Sex Offense	11	5%

Echo Glen (11/30/24)	Number	Percent
Robbery	38	34%
Assault	30	27%
Motor Vehicle Theft	13	12%

*Only includes offenses with >10 youth.

Facility behavior

GHS incident reports and average daily population		
Month	Incident reports that included violence	ADP at GHS
September-22	54	147
October-22	82	149
November-22	93	152
December-22	76	161
January-23	61	156
February-23	61	149
March-23	70	158
April-23	80	160
May-23	98	163
June-23	104	171
July-23	93	181
August-23	133	181
September-23	129	191
October-23	119	189
November-23	90	193
December-23	116	197
January-24	179	201
February-24	128	196
March-24	164	198
April-24	166	214
May-24	264	231
June-24	324	235
July-24	333	238

*JR update
 October 2024 = 78 acts of aggression
 November 2024 = 50 acts of aggression

Lewis Co Charging: Prison Riot

	#	%
CHELAN	2	2%
CLARK	0	0%
FERRY	0	0%
FRANKLIN	7	5%
GRANT	5	4%
KING	9	7%
LEWIS	87	67%
OKANOGAN	0	0%
PEND OREILLE	0	0%
PIERCE	10	8%
SKAGIT	1	1%
SPOKANE	8	6%
THURSTON	0	0%
WALLA WALLA	0	0%
WHATCOM	0	0%
YAKIMA	0	0%
Total	129	

40 Juvenile
47 adult

For more information

Lauren Knoth-Peterson

lauren.knoth-peterson@ofm.wa.gov

360.790.2015



Community Facility details

Community Facility	Gender	Operational Capacity	YSO Cap	Typical Age Range	Primary Program	School Location	Jobs
Ridgeview	Female	12	No Cap	All	School & Work	On-site & Community	Yes
Canyon View	Male	14	8 (Level 1 & 2)	16 - 25	School & Work	On-site & Community	Yes
Oakridge	Male	16	4 (Level 1 only)	16 - 25	Manufacturing Academy (MA) 12 weeks	Bates Technical College	Yes + Paid Internship after MA 12 weeks
Parke Creek	Male	14	3 (Level 1 & 2)	13 - 17	School & Work	On-site	Yes
Sunrise	Male	14	0	16 - 25	Vocational School & Work	Community (No On-site)	Yes
Twin Rivers	Male	16	8 (Level 1 & 2)	16 - 25	School & Work	On-site & Community	Yes
Touchstone	Male	16	0	16 - 25	School & Work	On-site & Community	Yes
Woodinville	Male	14	3 (Level 1 only)	16 - 25	School & Work	On-site & Community	Yes

Juvenile Rehabilitation Update

Partnership Council on Juvenile Justice

Felice Upton, Assistant Secretary Juvenile Rehabilitation

Jenny Heddin, Deputy Secretary Chief of Staff

December 5, 2024

www.dcyf.wa.gov



Washington State Department of
CHILDREN, YOUTH & FAMILIES

Current External Realities

- Despite years of declining juvenile crime and incarceration, the most recent year has seen a 61% increase in intakes to Green Hill since July 2023.
- Recent data from the WA Association of Sheriffs & Police Chiefs indicates a 24% increase in juveniles arrested for crimes between 2023 and 2024.
- At the same time, courts are sentencing more youth and issuing longer sentences.
- An increase of intakes has led to population growth at DCYF secure facilities
- DCYF has not been funded for additional capacity requests made in response to JR-25



Background: Recent Legislative Changes & Investments

JR to 25 (2018 and 2019)

- Moved young people from DOC to JR who qualified, expanded age to 25
- Investments in post-secondary and vocational programs

Less restrictive care (HB1186, 2021)

- Community Transition Services – serving part of sentence on EM in home/community
- Community facility investments
- Expand reentry aftercare support for all young people
- Revamp risk/needs and actuarial assessments

MH and SUD interventions

- Increased investment

Institutional Education (HB1295, 2021)

- Dropout reengagement examination
- Professional development for IE staff
- OSPI to modify or establish IE requirements
- Develop recommendations of a reformed & funded IE program

Solitary confinement (2020)

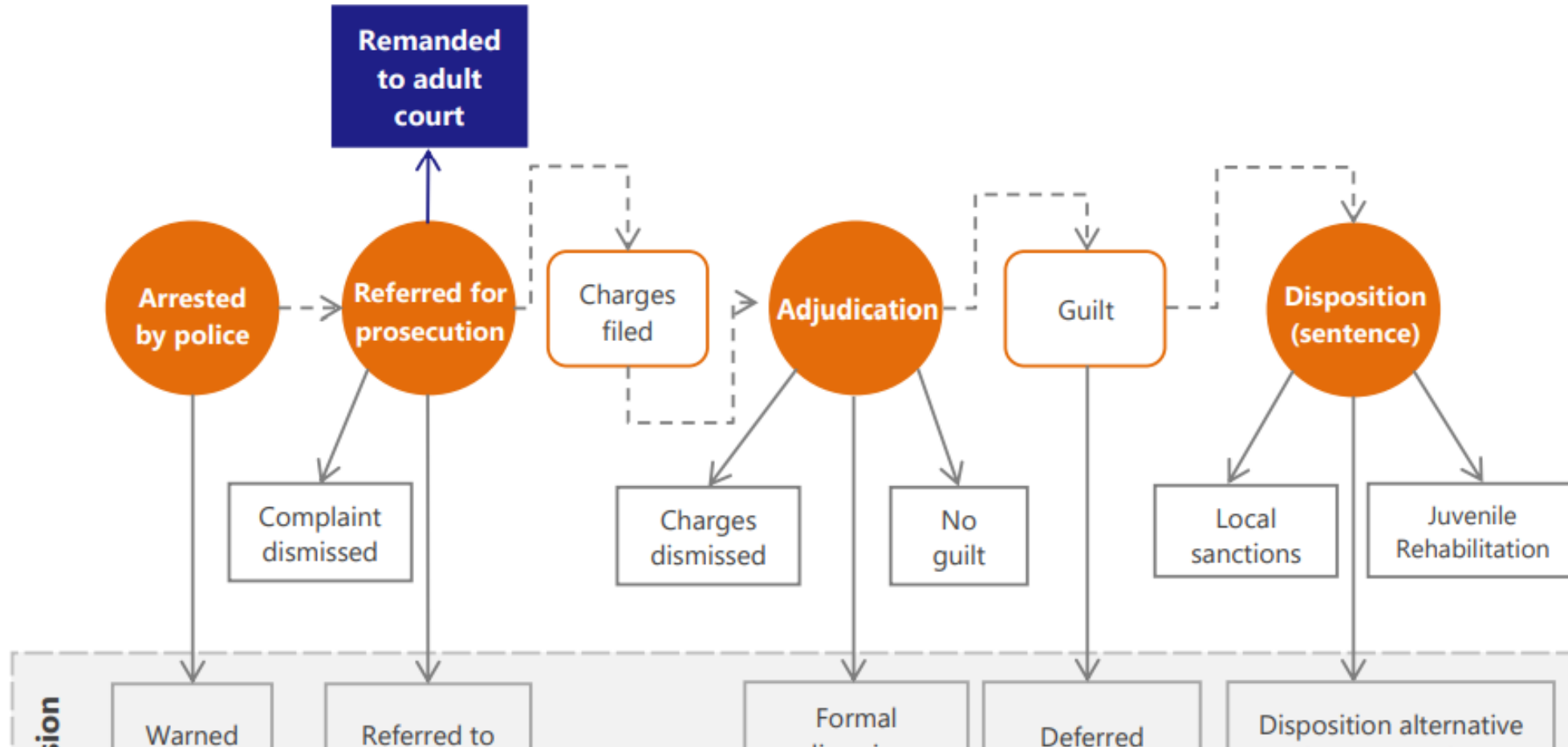
- Increased focus and requirements
- Limited Room Confinement and Isolation only

Challenging Staffing Realities Throughout:

- ~60% JR Staff Turnover during COVID Pandemic
- New staff coincided with unprecedented population increase + shift in population

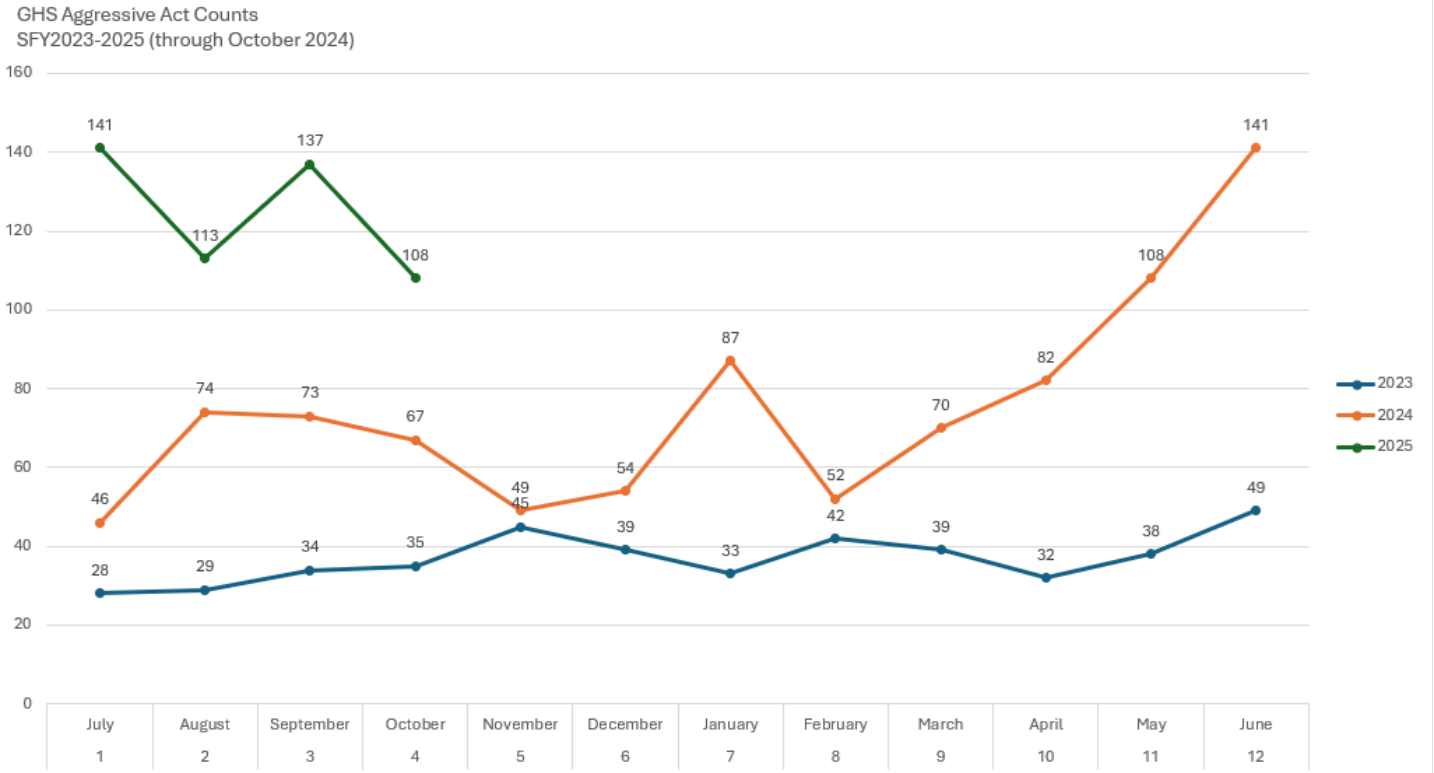


Pathways to JR and Diversion Opportunities

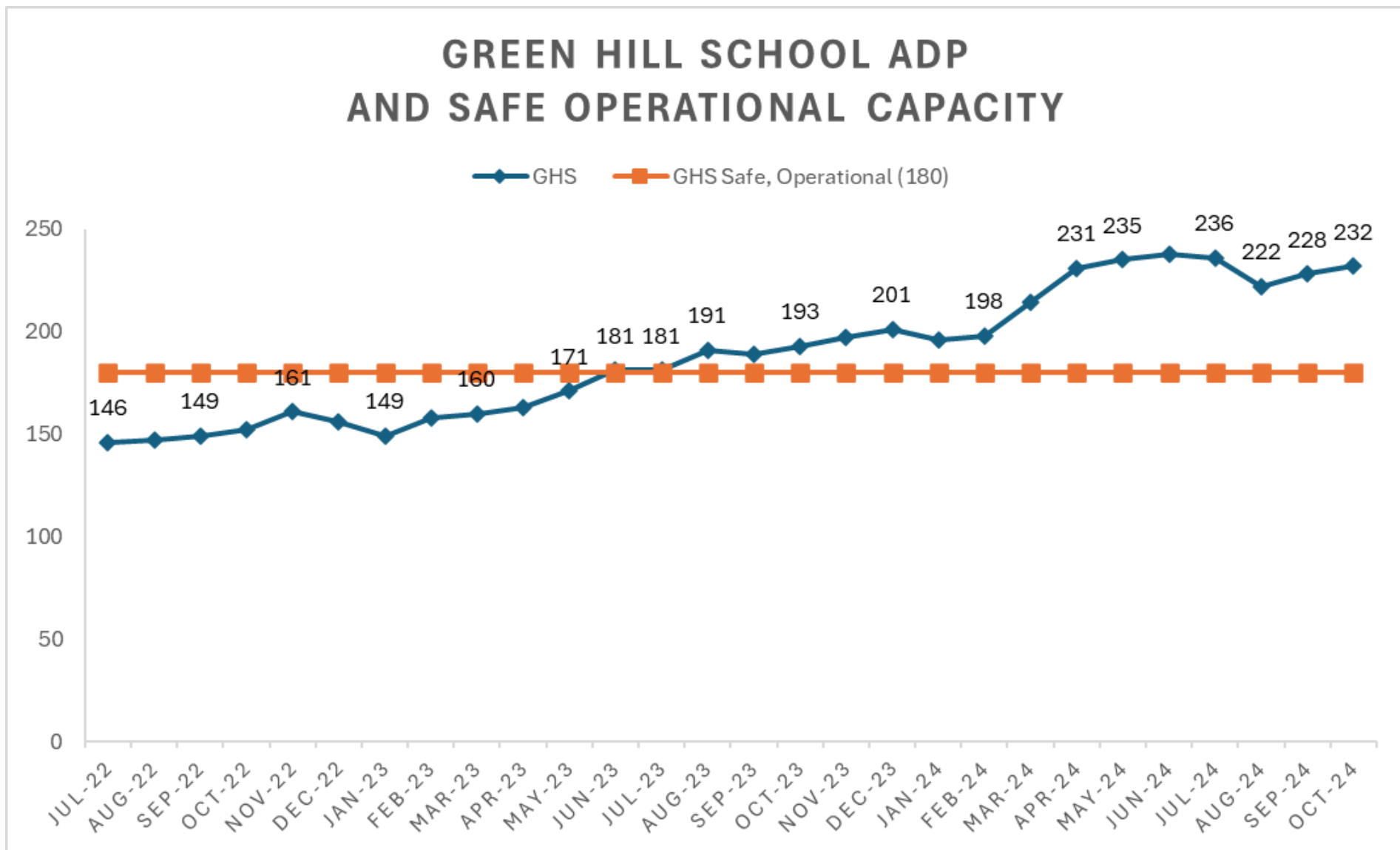


Impacts of Overcrowding

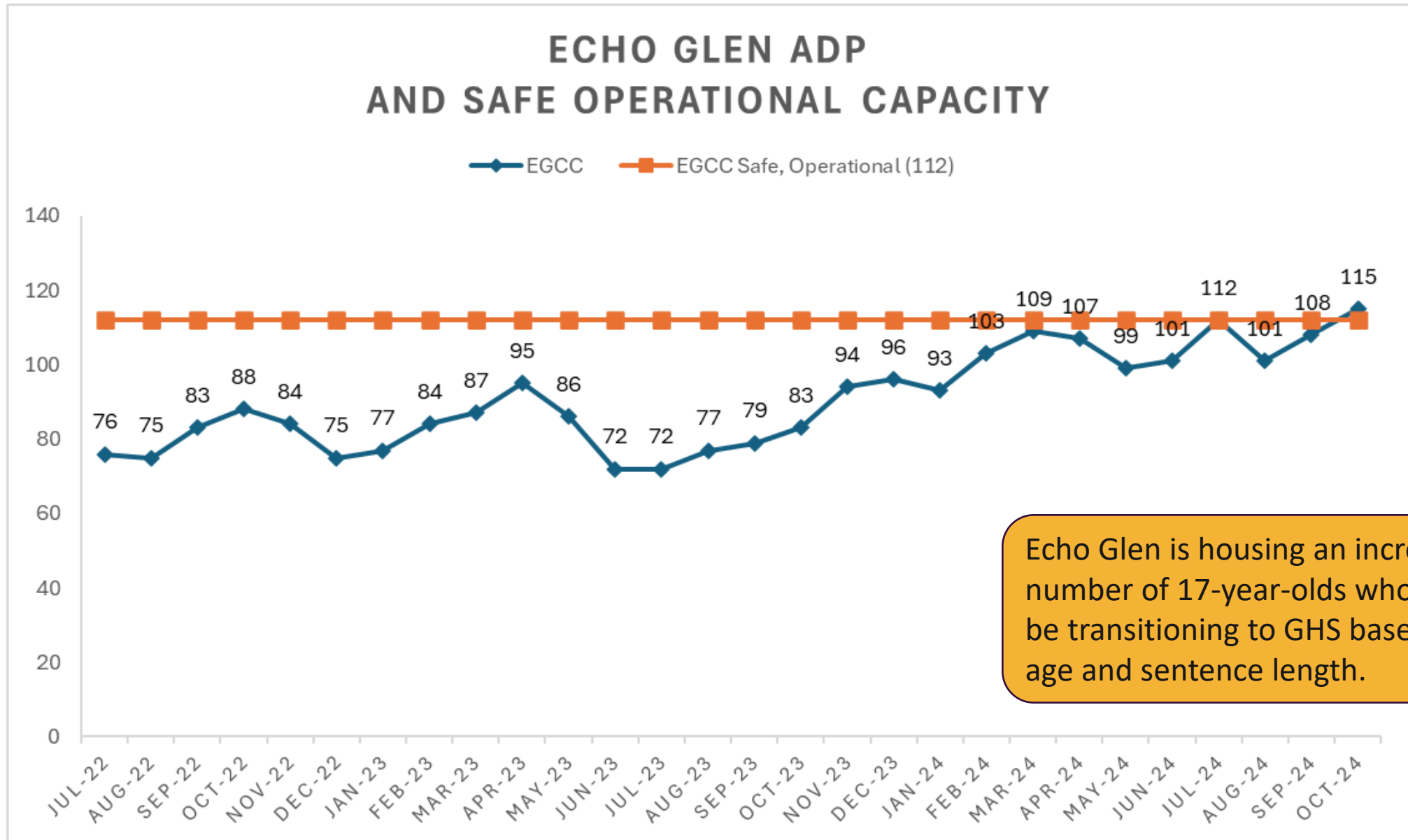
- Research indicates overcrowding and extended room confinement...
 - Leads to increase in incidents (fights, assaults),
 - Impacts youth and staff’s perception of safety (higher rates of reporting safety concerns and fear for safety),
 - Contributes to the overall facility culture and environment (living conditions, decreased programming, negatively impacting staff wellness)
- Rapid population growth impacts staffing ratios
- Leads to cycle of retention issues particularly post pandemic and with overcrowding
- Limited space at Green Hill means young people must double-bunk
- It is difficult for success to occur in an overcrowded facility
- Impacts noise, cleanliness, access to programmatic opportunity



Green Hill School has been above Safe Operational Capacity since July 2023; March 2024 brought a dramatic spike

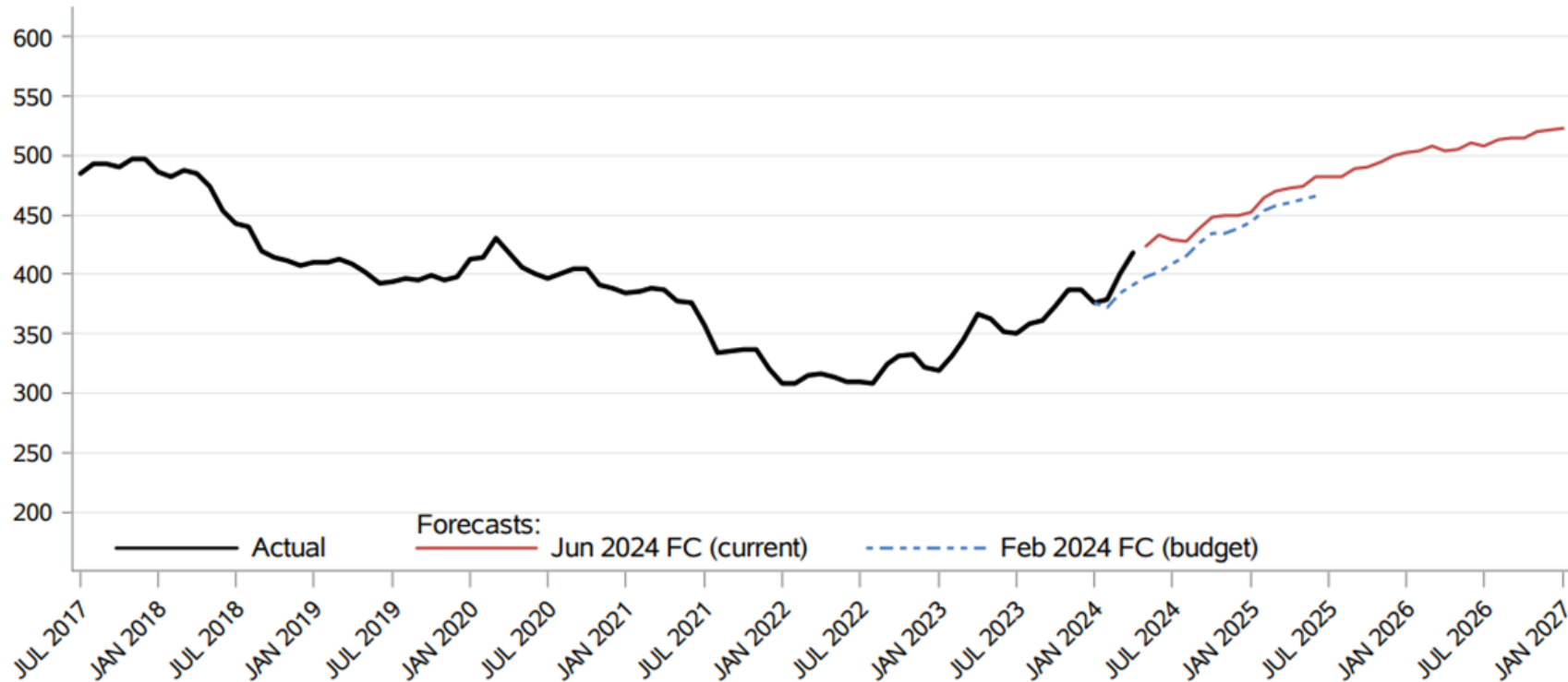


Echo Glen population recently exceeded Safe Operational Capacity



Echo Glen is housing an increasing number of 17-year-olds who should be transitioning to GHS based on age and sentence length.

Current forecast shows continued growth across JR for the foreseeable future



Timeline of Recent Events

July 5, 2024: Suspension of Entries at Echo Glen and Green Hill

July 12, 2024: Transfer of 43 Young men to DOC

August 2, 2024: Transferred young men return to GHS

August 9, 2024: Lifting of Intake Freeze

Summer/Fall, 2024: DCYF review of existing infrastructure to lease/operate for short-term capacity

November 25, 2024: Governor Inslee announces new DCYF JR capacity

Projected: Jan/Feb 2025: Launch of Emerging Adult Leadership program



Three Pathways out of JR Institutional Setting

1. Release with mandatory parole or voluntary wrap around case management (Community Assisted Reentry)
2. Transfer to Less Restrictive Settings
 - Community Facilities
 - Minimum-security, small facilities are located throughout the state and provide educational, vocational, employment and reentry opportunities in a supported community setting.
 - Community Transition Services
 - CTS allows JR to transfer young people into the community to an approved address to finish their residential sentence on electronic monitoring. E2HB 1186 (2021) established the program.
3. Transfer to Department of Corrections
 - Those with post 25-sentence will transfer to DOC at age 25
 - Voluntary or non-voluntary transfers can occur with due process and review hearing



Classification Process and Least Restrictive Options





You and your case manager will have **Future Planning Meetings (FPMs)** to create your **Future Plan** and update your plan as changes occur. You will receive a copy of all updated plans.

- Initial FPMs** > Scheduled within 30 days after the intake date.
- Interim FPMs** > May occur anytime to support updating future plans and transitions.
- Release FPMs** > Scheduled 45 days prior to your release date.



Future Plans

- Our goal is for all young people to have ownership of their future plan and leave our care with a plan that is comprehensive, achievable and supported by everyone involved
- Involves evaluation and preparedness related to dynamic risk
- Dynamic risk is used throughout JR to inform program decisions rather than static risk which is less changeable.
- Moved to risk/need/responsivity model

Evaluation

Assessments

- IDEA Assessment
- Sexually Aggressive or Vulnerable Youth
- YSO Coordinator reviews sexual offense history
- School Specialist develops education profile
- Detention behavior + Behavior in intake captured
- Engagement in programming captured and DBT level established
- Warrant check/DNA/HIV

Representation

- Classification Unit
- IDEA Assessor
- Residential Leadership
- Mental Health
- Transition Specialist
- Admin Assistant (documents)

Documented Factors Reviewed to inform Classification Designation

- Offense Type/High-Profile
- IDEA
- Behavioral Review
 - Detention
 - Intake Unit
- Escape History
- Sexual Aggression
- Education Profile
- Substance Use Consideration

Every 30 days, Security Classification Specialist Reviews:

- CBA, Behavioral violations, treatment progress and participation, and statutory rule-outs to either confirm or change classification



IDEA Assessment- Integrated Developmental Evaluation and Assessment

1,147 Initial and follow-up needs assessments were completed thus far in 2024 (across JR).

369 intakes since Jan. 2024 (as of 11/8/24), 353 (96%) received the needs assessment, 16 others pending.

95+% of those initial assessments were completed within 30 days.

53% (or 196) of those initial assessments were completed within 14 days.

Was required for CTS to be implemented and now used throughout the continuum

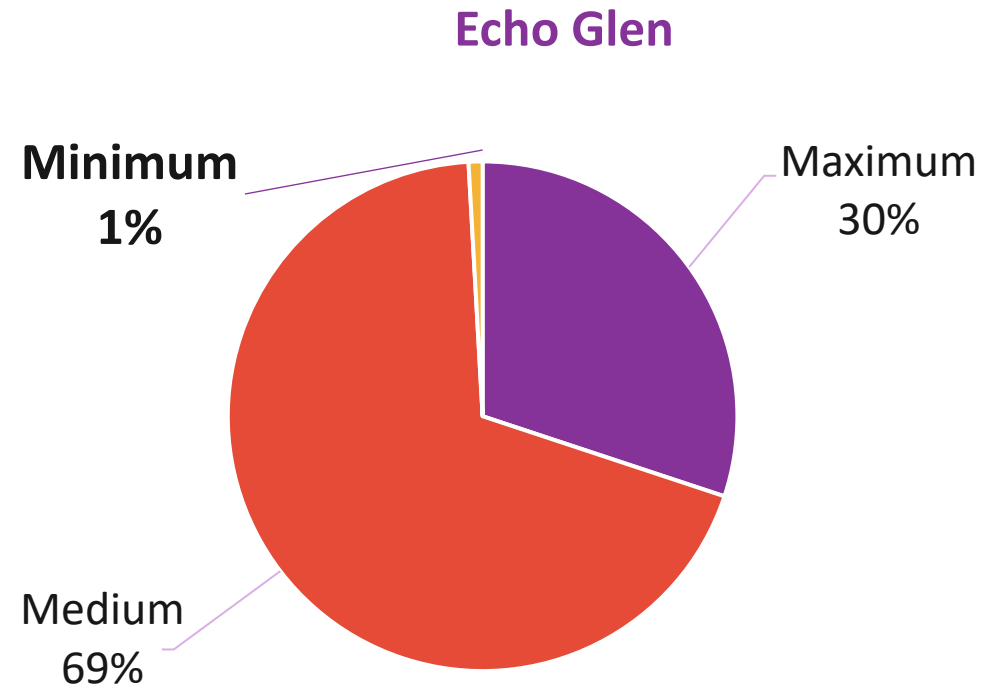
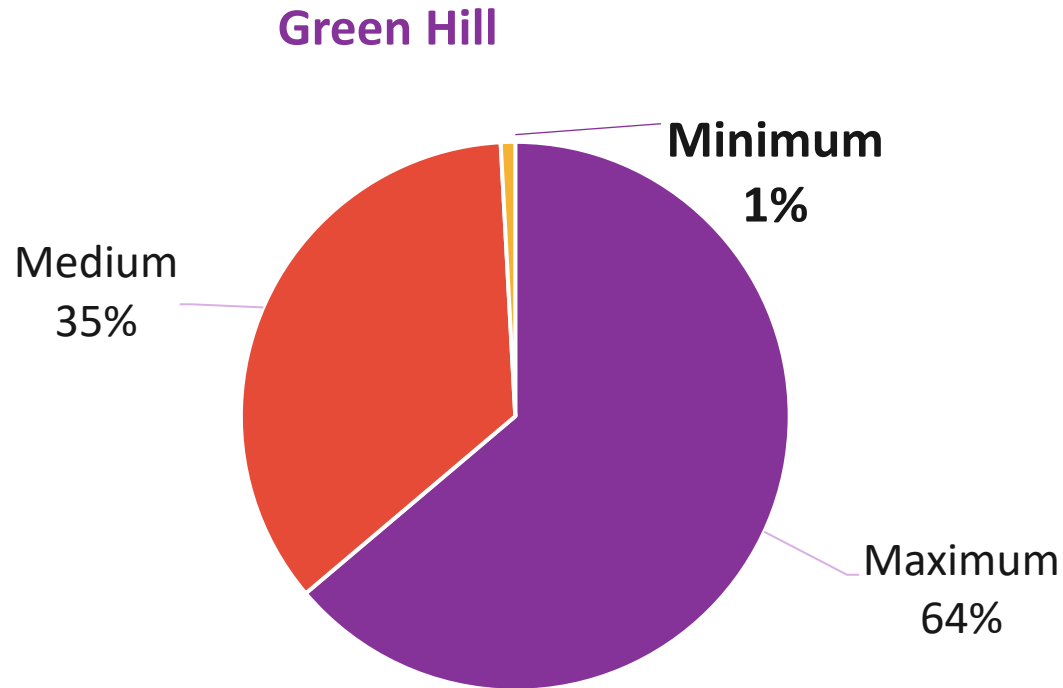
Evaluates domains known to be impactful on recidivism/desistance

Same domains as FPM

Security Classification

- Purpose: Ensure safety, support rehabilitation, and manage individual youth risks through systematic, comprehensive assessment
 - Static Risks: Unchangeable historical factors (prior offenses, family history)
 - Dynamic Risks: Modifiable characteristics (behavior, treatment engagement)
 - Holistic evaluation determines appropriate intervention strategies
- Procedural Justice Principles
 - Transparent decision-making
 - Consistent rule application
 - Clear communication of classification rationale
- 30-Day Review Process
 - Evaluate behavioral violations
 - Track treatment progress
 - Review statutory considerations
 - Adjust classification as needed
- Classification Documentation
 - Objective criteria
 - Detailed justification
- Core Objective: Balance institutional safety with individual youth development and successful reintegration

Residents with a minimum-security classification may be eligible for a less restrictive option



Security classification breakdown as of week of 12.2.2024

Multi- Disciplinary Placement Team- CF and CTS

MDT Purpose

- Evaluate and determine eligibility for minimum security Community Facility placement
- Conduct objective, impartial evaluation based on:
 - Objective eligibility criteria
 - Treatment participation and progress
 - Community risk and safety considerations
 - Key Process Highlights:
- Weekly committee meetings
- Case presentation by Dedicated Transition Specialists
- Documented review of each individual
- Final approval by designated leadership
- Transparent communication with individual about decision

Guiding Principles:

- Procedural justice
- Honesty and integrity
- Respect for committee members and individual
- Alignment with DCYF/JR Vision and Mission

Community Facilities

- CFs are small, community-based minimum-security facilities where young people can be in community for up to 16 hours a day for school, work, and extracurriculars.
- DCYF has 8 CFs across the state with a total of 116 beds.
- Three CFs have specialty populations:
 - Ridgeview: Female-identifying
 - Parke Creek: Younger males
 - Oakridge: Manufacturing academy cohort

Eligibility

- Served 10% of their sentence, or at least 30 days
- Eligible for Intuitional Minimum classification
- Are not ruled out by statutorily required Client Behavior Assessment

Rule Outs

- DOC commitment of a sexual offense
- Eligible for civil commitment
- Pending charges or warrants
- Escaped or attempted escape within 1 year
- Suicide precautionary level 1, 2 ,3
- Pending DOC commitment
- Adult sentence with an earned release date past 25th birthday



Community Transition Services (CTS) Implementation Overview

- CTS is supportive community-based custody where an eligible young person serves the final portion (up to 18-months) of their term of confinement residing in their community
- CTS launched in May of 2024 with the first participant transferring to Spokane County.
- As of October 8, 2024, there have been seven additional CTS participants in various counties including King, Pierce, Snohomish, and Thurston.
- CTS is now available in all counties across the state. Careful consideration is given to the identified needs of the young person, their goals on CTS, and the availability of community resources and regional capacity to support a successful transfer.
- JR has the capacity to serve up to 50 young people on CTS and has plans to slowly increase the number of participants over time to ensure a successful and sustainable practice.
- An interim CQI report will be received by me soon in order to make necessary changes to best serve or maintain

Young Person is Eligible if (per RCW):

- JR sentence and served 60% of minimum sentence, at least 15 weeks
- In JR with DOC sentence, have a release date before 26th birthday, served 60% of term of confinement, at least 15 weeks
- Are eligible for minimum security classification

Young Person is Not Eligible if (per RCW):

- Have pending charges or warrants
- Have sentence for sex offense and classified as Level III Sex offender
- Will be transferred to DOC, are in DOC custody, or under DOC supervision
- Were adjudicated or convicted of Murder in 1st or 2nd degree
- Meet definition of Persistent Offender
- Require an out of state CTS placement

Next Steps



Next Steps for a Future JR System

- DCYF developing an array of policy recommendations to achieve and maintain safe operational capacity, including:
 - Funding and structure of front-end diversion programs
 - Partnership and creativity around serving young people with short-sentence lengths
 - Regular reviews for appropriateness of placement (per RCW 72.01.410)
 - Codifying safe operational capacity and exploring additional pathways for population when over-crowded
- Additional capacity
 - Emerging Adults Leadership Program at Stafford Creek
 - Pursuing additional capacity for smaller, medium-security community facilities
- DCYF Funding requests for 2025 Legislative Session
 - Mental Health and Wellbeing
 - Employment and Education
 - Therapeutic Staffing and Processes

Emerging Adults Leadership Program at Stafford Creek

Overview

- 6-month Emerging Adults Leadership Program at Stafford Creek
- Location and physical space constraints of Stafford Creek lend themselves to a shorter duration program that rotates residents after 6 months.
- Residents will build skills and exit as a leader back into the Green Hill community, a community facility, or release from JR.

Population

- Will house 48 young men
- Over age of 18, preference for young adults over the age of 21
- Have received a HS Diploma or GED
- Medium security
- Stable mental health and no significant ongoing medical needs



Thank you

Felice Upton, Assistant Secretary Juvenile Rehabilitation
Felice.Upton@dcyf.wa.gov

Jenny Heddin, Deputy Secretary Chief of Staff
Jenny.Heddin@dcyf.wa.gov

