

# Office of Innovation, Alignment, and Accountability

## ESIT State Interagency Coordinating Council Performance-Based Contracting Overview

October 16<sup>th</sup>, 2024

DCYF's Office of Innovation, Alignment, and Accountability (OIAA) builds DCYF capacity to make evidence-informed decisions, continuously learn and improve, and successfully enact system reform



# Today's Goals

- Outline the Performance-Based Contracting framework
- Understand where ESIT is in the PBC initiative
- Review connection between ESIT PBC work and reporting requirements



# DCYF Performance-Based Contracting (PBC)

Per HB 1661 (2017), PBC is an initiative led by the DCYF Office of Innovation, Alignment, and Accountability (OIAA), which is responsible for building agency capacity to make evidence-informed decisions, continuously learn and improve, and successfully enact system reform.

## *Overarching Goals*



Ensure state resources are directed toward high-performing contractors



Encourage and support all contractors to continually improve



Use PBC as a tool to help eliminate disproportionality and disparities

## *Key Principles*



Build on and acknowledge teams' prior experiences with PBC



It takes a village - partnership at each step of the process is key



Leverage existing measures and state / federal reporting requirements



# What is Performance Based Contracting (PBC)?



# PBC as Continuous Improvement



# ESIT PBC Development

## SERVICES

Will be reported when DMS is fully established

## QUALITY

**Capacity to accurately complete the Child Outcome Summary (Indicator C-3)**

## OUTCOMES

**Capacity to increase parent's confidence in their ability to support their child's development in all areas (Indicator C-4)**



<b>SERVICES</b> <i>(Activities and Outputs)</i>	<b>QUALITY</b> <i>(Process Measures)</i>	<b>PROXIMAL OUTCOME</b> <i>(Immediate Results)</i>	<b>PERFORMANCE MANAGEMENT TOOL (PMT)</b>	<b>DISTAL OUTCOME</b> <i>(Overall Results)</i>	<b>DCYF Strategic Priorities</b> <i>supported by contracted services</i>
<p><b>Services delivered:</b></p> <p>Verified services were provided on a monthly basis*</p> <p><b>(5) Child Find (Birth to One):</b> % of infants and toddlers birth to 1 with IFSPs compared to national data</p> <p><b>(6) Child Find (Birth to Three):</b> % of infants and toddlers birth to 3 with IFSPs compared to national data</p>	<p><b>Capacity of EIS Provider to increase the parent's confidence in their ability to support their child's development in all areas:</b> measured by a revised ESIT Family Survey</p> <p><b>(2) Services in natural environment:</b> % of infants and toddlers with IFSPs who primarily receive early intervention services in the home or community based settings</p>	<p><b>(4) Family Involvement:</b> % of families reporting that early intervention services have helped their family</p> <p>A. Know their rights;  B. Effectively communicate their children's needs; and  C. Help their children develop and learn</p>	<p>Local System Improvement Plan</p>	<p><i>Kindergarten Readiness:</i>  Average number of domains ready in WA kids</p>	<p><b>Standard Priorities:</b></p> <ul style="list-style-type: none"> <li>Eliminate racial disproportionalities and advance racial equity</li> <li>Improve quality and availability of provider services</li> </ul> <p><b>Priorities:</b></p> <ul style="list-style-type: none"> <li>Create a high-quality integrated B-8 system</li> </ul>
<p><b># Served</b></p> <ul style="list-style-type: none"> <li>- Eligible</li> <li>- Enrolled</li> <li>- Completed</li> </ul>	<p><b>Capacity of EIS Provider to complete the Child Outcome Summary (COS) Report:</b> COS ratings are determined using the Decision Tree Tool</p> <p><b>1) Timely provision of services:</b> % of infants and toddlers with IFSPs who</p>	<p><b>(3) Early childhood outcomes:</b> % of infants and toddlers demonstrating improved :</p> <p>A. Positive social-emotional skills (including social A. relationships);  B. Acquisition and use of knowledge and skills (including</p>	<p>Local System Improvement Plan</p>	<p><i>Kindergarten readiness:</i>  Percentage Kindergarten ready in Social-Emotional domain in WA Kids</p>	

	<p><b>received early intervention services in a timely manner</b></p> <p><b>(7) 45-day timeline: % of eligible infants and toddlers with IFSPs for whom an initial evaluation, assessment, and IFSP meeting were conducted within 45 days</b></p> <p><b>(8) Early childhood transition: % of toddlers with disabilities exiting Part C with timely transition planning (90 days prior to 3<sup>rd</sup> birthday)</b></p>	<p>early language/ communication); and C. Use of appropriate behaviors to meet their needs.</p>			
<p><b>Working Assumptions:</b>  <i>The SSIP, OSEP reporting, and PBC framework are all in pursuit of the same outcomes for children and families, and that PBC is not a separate initiative requiring completely new reporting. The SSIP Logic Model may be a useful companion piece to any conversations about how all of these efforts align.</i></p>					



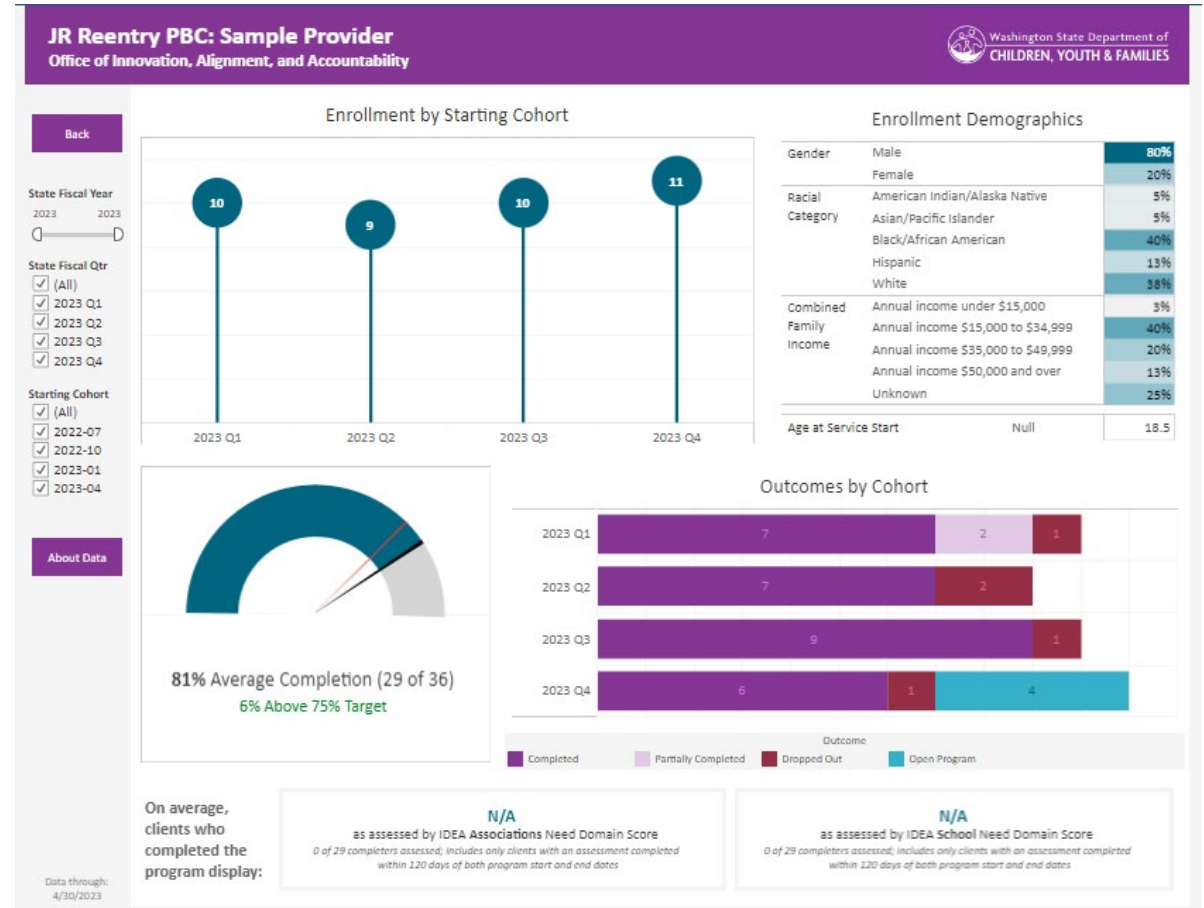
# Next Steps & Federal Reporting Requirements

PBC work culminates in the production of a data dashboard

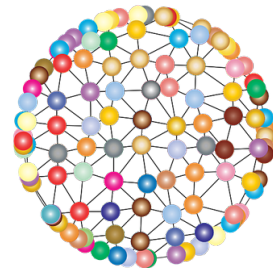
- Displays data pertaining to service, quality, and outcome measures
- ESIT quality and outcome measures are aligned with existing indicators

ESIT Dashboard work will begin after the launch of ACORN

Goal: PBC dashboard replace static data profiles and determination reports



What questions do  
you have?














Elizabeth Meyer, PBC  
Implementation Specialist  
[elizabeth.meyer@dcyf.wa.gov](mailto:elizabeth.meyer@dcyf.wa.gov)



# Appendix

-  Research
-  Partner Engagement
-  Equity
-  Logic Model
-  Performance Management
-  Contract Language
-  Continuous Improvement



# ESIT's FY21-22 PBC Metrics, Targets & PMTs

QUALITY MEASURES	Metric	Target	Performance Management Tool (PMT)
Capacity to accurately complete the Child Outcome Summary (COS)	COS Ratings are determined using the Decision Tree Tool (State Performance Plan: Indicator C-3)	70% of FRCs/Teams will use the decision tree with 80-100% of families.	Local System Improvement Plan
OUTCOME MEASURES	Metric	Target	Performance Management Tool (PMT)
Capacity to increase parent's confidence in their ability to support their child's development in all ages	ESIT Family Survey (State Performance Plan: Indicator C-4)	A. Know their rights – 83.5% B. Effectively communicate their child's needs – 91.5% C. Help their child develop and learn – 87.5%	Local System Improvement Plan

