



# NAVIGATION AND INTERCONNECTIVITY WEBINAR



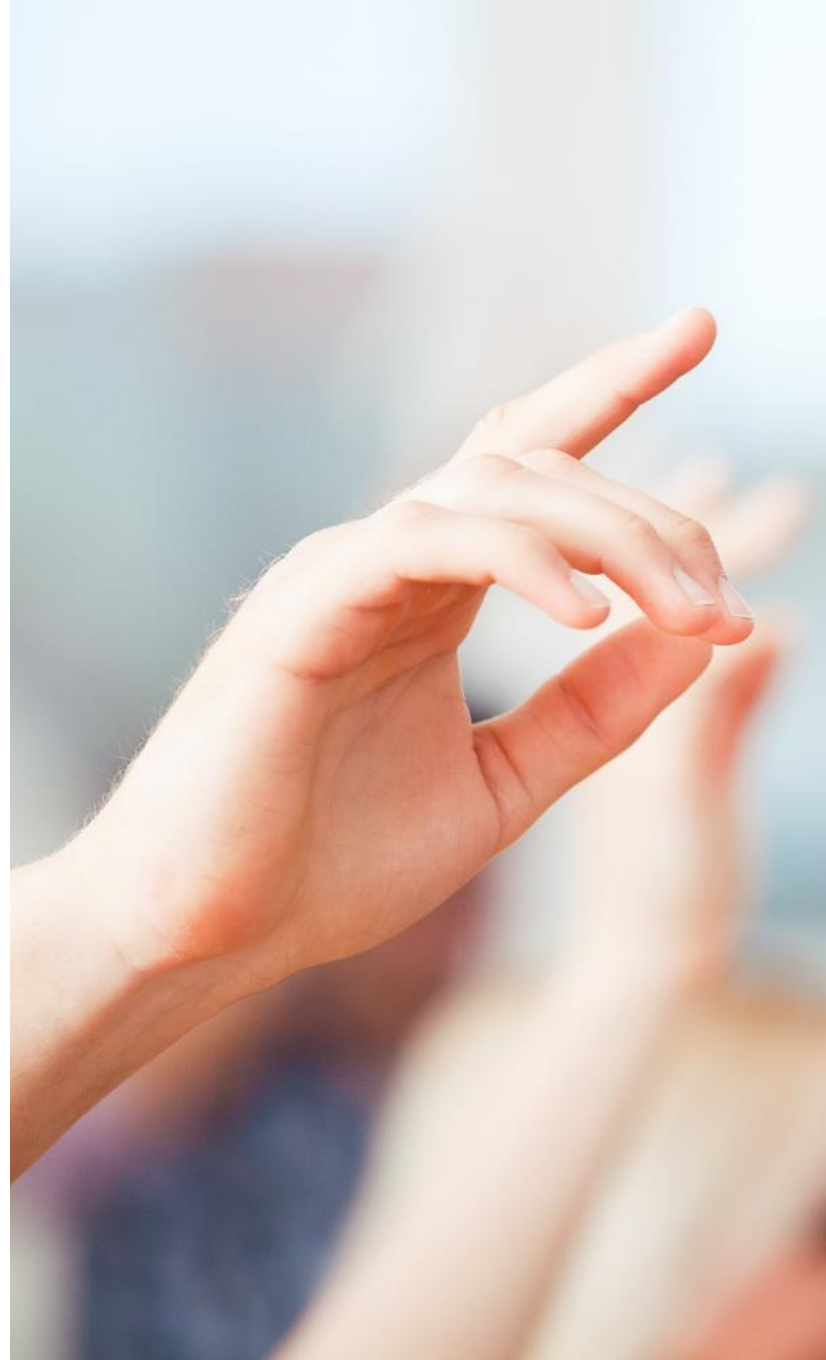
OCTOBER 11, 2018



WASHINGTON STATE  
Department of  
Children, Youth, and Families

# Objectives

- Background and Principles
- Navigation
- Interconnectivity



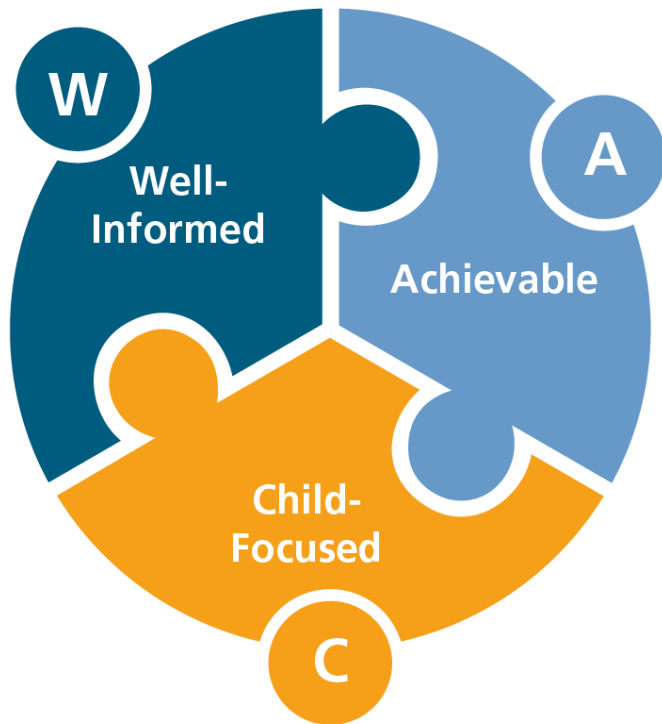
# Foundational Quality Standards

**“Foundational Quality Standards”** refers to the administrative and regulatory requirements contained within this chapter, 170-300 WAC. These standards are designed to promote the development, health, and safety of children enrolled in Center and Family Home Early Learning Programs. The department uses these standards to equitably serve children, families, and early learning providers throughout Washington state.

# Alignment Key Principles



# Alignment Message



## Well-Informed

Regulation development and negotiation process was robust with many touchpoints, including provider voices with statewide representation.

## Achievable

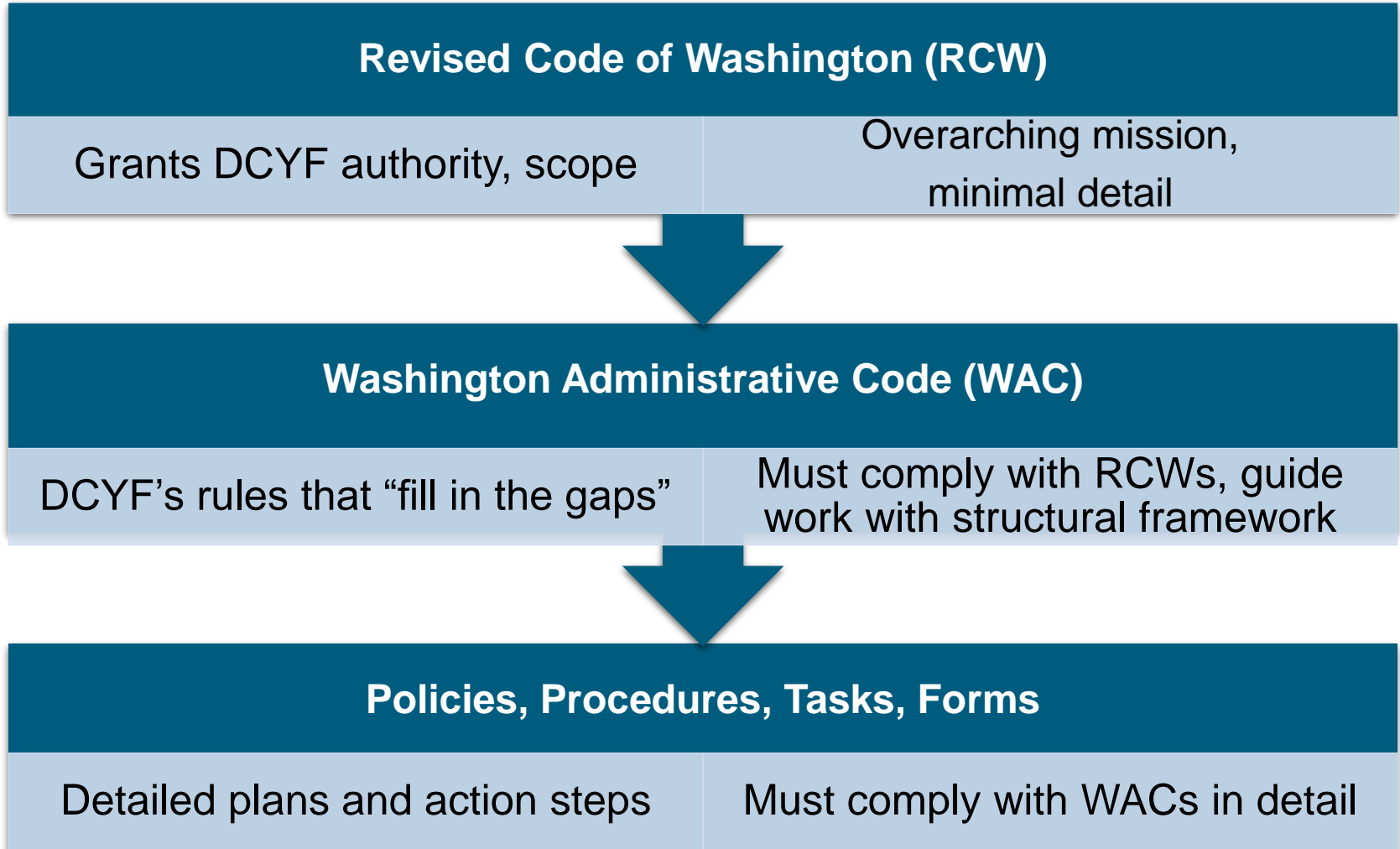
These regulations are attainable through a variety of provider practices and supports.

## Child-Focused

The WAC is based on current research and it's implementation means better outcomes for children.

# Navigation

# Scope of Authority Connection



# 110-300

## CHAPTER

110-300

Foundational quality standards for early learning programs

Sections are organized into **7 TOPICS**

Sections 0001-0030  
Intent and Authority

Sections 0055-0065  
Child Outcomes

Sections 0080-0085  
Family Engagement

Sections 0100-0120  
Professional Development

Sections 0130-0296  
Environment

Sections 0300-0360  
Interactions and Curriculum

Sections 0400-0505  
Program Administration and Oversight

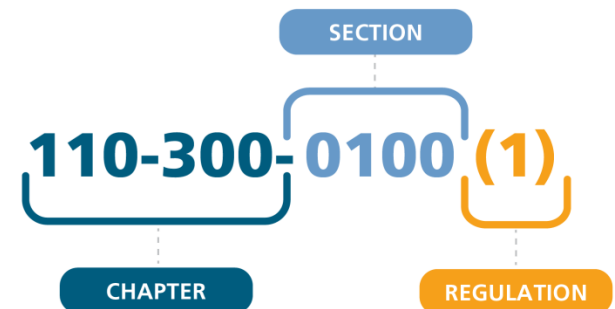
Each section has a title and the numbered regulations

Each Section has a title and the numbered regulations

**Section 0100**  
Staff Qualifications

- (1) Family home early learning program licensees
- (2) Center early learning program licensees

Example of a regulation reference number





# Intent and Authority

---



# Child Outcomes



# Family Engagement and Partnerships





# Environment

**Space and Furnishings**

**Activities**

**Safety**

**Food and Nutrition**

**Health Practices**

**Cleaning and Sanitation**

**Sleep and Rest**

**Infant and Toddler**



# Interactions and Curriculum



# Program Administration and Oversight

---



# Interconnectivity



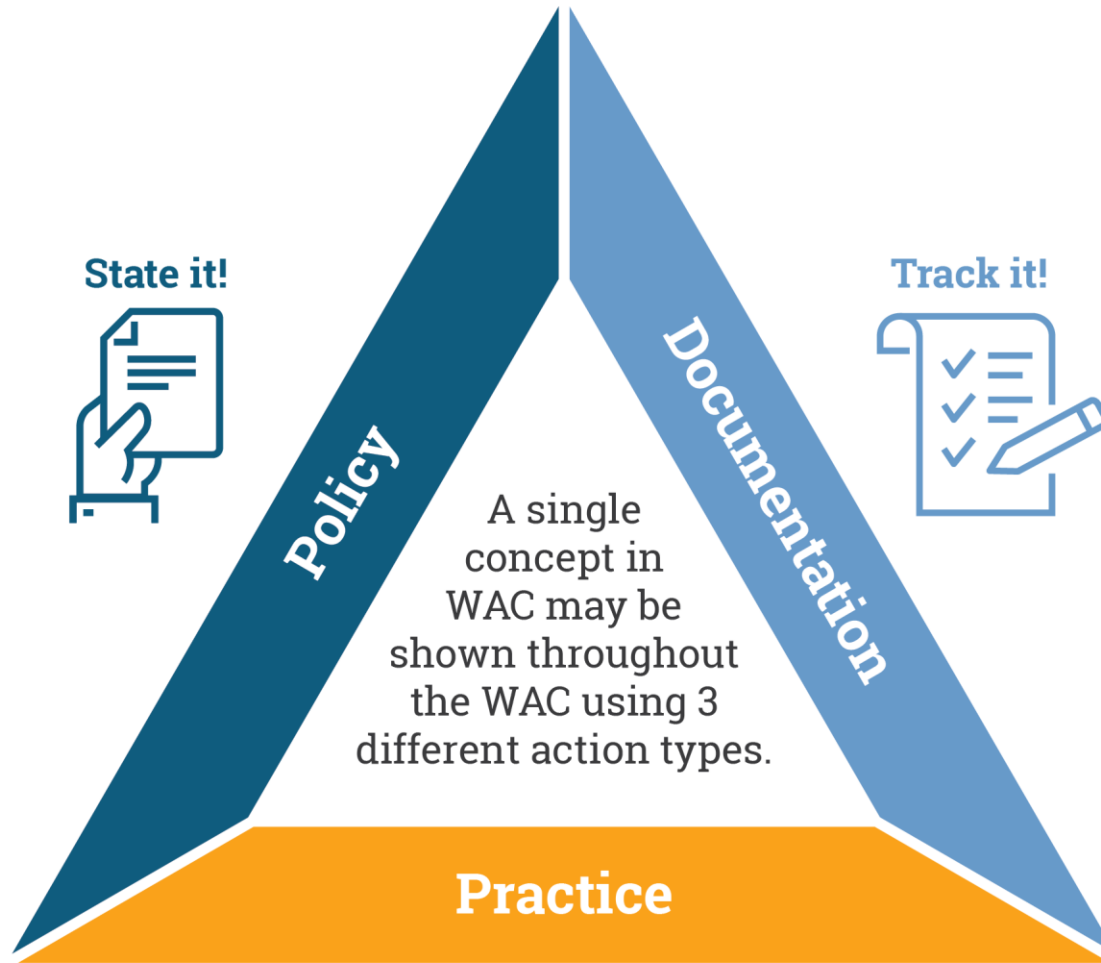
# Interconnectivity

## What?

- Interconnectivity is the description of how a provider practice or duty in WAC is represented in different ways throughout the Chapter. Interconnectivity does *not* mean duplication.

## Why?

- Interconnectivity creates a framework of guidance and accountability for completing practices or duties.



**Do it!**

# Interconnectivity Three Weave

## Policy

110-300-0450(1)

An early learning provider must have and follow formal written policies in either paper or electronic format, including:

- (b) A family engagement and partnership communication plan;

## Practice

110-300-0055(1)

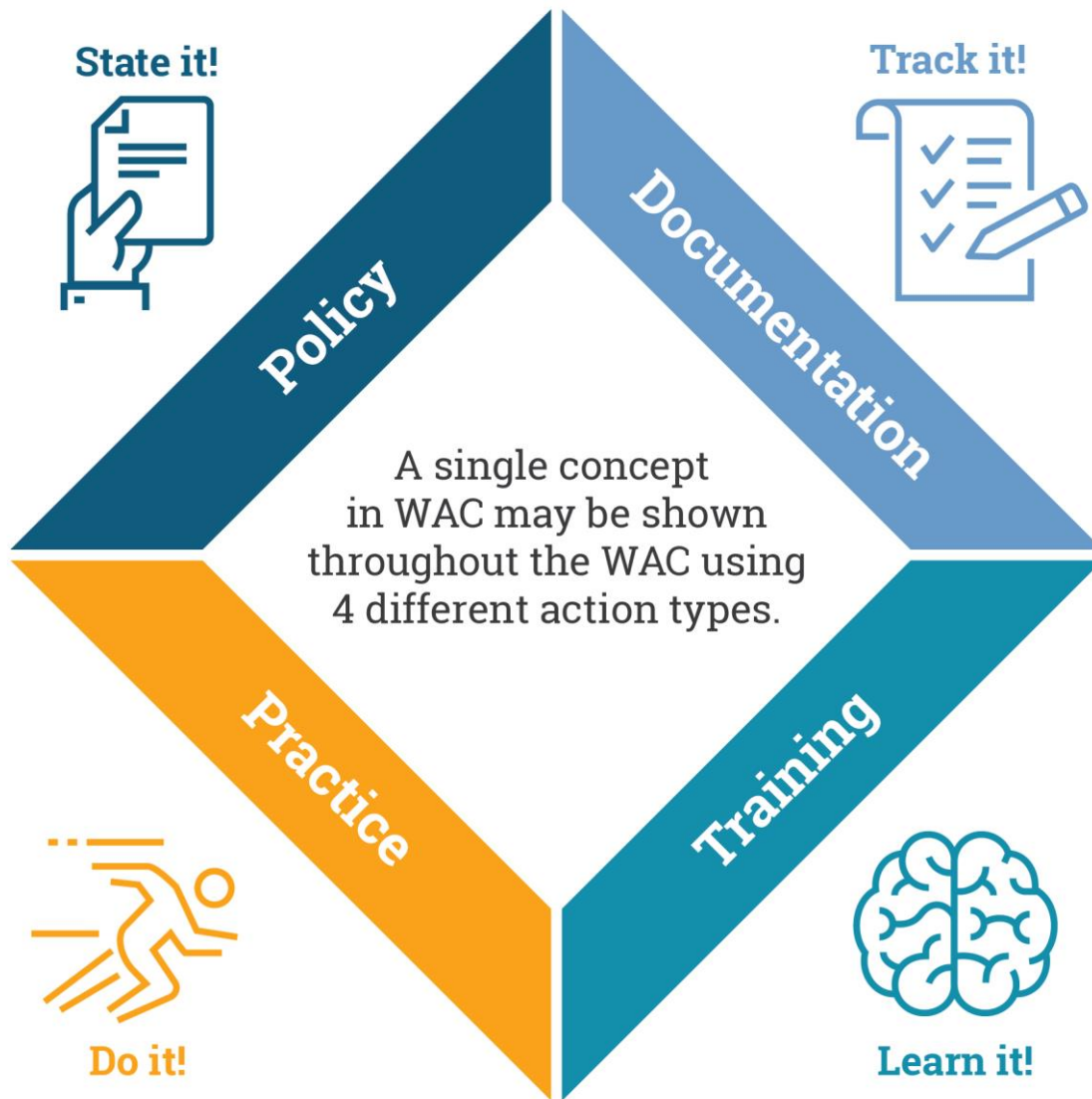
An early learning provider must inform parents or guardians about the importance of developmental screenings for each child from birth through age five.

## Documentation

110-300-0460(2)

Each child's enrollment record must include the following:

- (k) Notification of child developmental screening information given to the child's parent or guardian, if applicable.



# Interconnectivity Four Weave

## Policy

110-300-0490(1)

An early learning provider must have and follow a child restraint policy that contains behavior management and practices, pursuant to WAC 110-300-0335

## Practice

110-300-0335 (1)

Physical restraint must only be used if a child's safety or the safety of others is threatened ...

## Documentation

110-300-0460(2)

Each child's enrollment record must include the following:

(h) A parent or guardian approved plan for use of physical restraint and documentation of parental or guardian notification

## Training

110-300-0106(9)

Family home licensees, center directors, assistant directors, program supervisors, lead teachers, and other appropriate staff members must complete the child restraint training as approved or offered by the department. This training must be completed annually; and...

Questions?

Email [dcyf.wacqanda@dcyf.wa.gov](mailto:dcyf.wacqanda@dcyf.wa.gov)