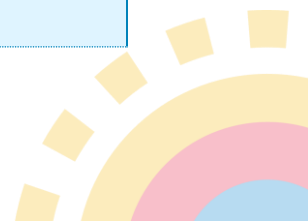


## Program Profile Teacher Survey 2.0

| Section                            | Questions  |
|------------------------------------|--|
| <b>My Story</b>                    | What motivates you to work in Early Childhood Education (ECE)?   |
|                                    | What brings you joy when you are working with children?  |
|                                    | Which areas of your learning environment are you most proud of?<br>And why?  |
| <b>Child Outcomes</b>              | Do you have children with an identified disability enrolled?   |
| <b>Interactions and Curriculum</b> | <p>What would you like support in for promoting positive interactions in your classroom? (Check all that apply)</p> <ul style="list-style-type: none"> <li>a. Using back and forth conversations with children</li> <li>b. Promoting children's problem solving</li> <li>c. Encouraging positive behavior</li> <li>d. Adapting the schedule or routines for children with a disability</li> <li>e. Talking with parents of children with a disability</li> <li>f. Peer support for children with a disability</li> <li>g. Adapting the environment for children with a disability</li> <li>h. Helping children learn about nature and science</li> <li>i. Helping children learn math</li> <li>j. Helping children learn art</li> <li>k. Helping children learn outdoor gross motor skills</li> <li>l. Setting up learning activities</li> <li>m. Supporting routines like arrival, transitions, hand washing and meal supervision</li> <li>n. Supporting infants and toddlers</li> <li>o. None</li> </ul> |



| Section                                  | Questions   |
|--|---|
| <b>Interactions and Curriculum</b>       | <p>Which of the following practices would you like support in? (Check all that apply)</p> <ul style="list-style-type: none"> <li>a. Supporting child development</li> <li>b. Scaffolding children's learning</li> <li>c. Using enhanced language with children</li> <li>d. Promoting child engagement</li> <li>e. Encouraging sensitivity to children's needs</li> <li>f. Setting up the learning environment/classroom</li> <li>g. Supporting interactions between children</li> <li>h. Supporting positive teacher-child interactions</li> <li>i. None</li> </ul> <hr/> <p>My curriculum includes activities, stories, and discussions that help students learn about and respect the different types of families and languages represented in our program.</p> <ul style="list-style-type: none"> <li>a. Strongly disagree</li> <li>b. Disagree</li> <li>c. Neither agree nor disagree</li> <li>d. Agree</li> <li>e. Strongly agree</li> </ul> |
| <b>Family Engagement and Partnership</b> | <p>Please select all the items you would like support in for family engagement and partnerships. (Check all that apply)</p> <ul style="list-style-type: none"> <li>a. Inviting families to visit</li> <li>b. Including families in decisions about transitions between classrooms and programs</li> <li>c. Inviting families to share their values and culture</li> <li>d. Supporting children with special needs</li> <li>e. Supporting English language learners</li> <li>f. Incorporating children's home languages into classroom activities</li> <li>g. Regular parent conferences</li> <li>h. Families volunteering in the classroom</li> </ul>   |



| Section                                  | Questions   |
|--|---|
|  | <ul style="list-style-type: none"> <li>i. Talking with families about their child's development (including screening/assessment results)</li> <li>j. None of the above</li> </ul>   |
| <b>Family Engagement and Partnership</b> | Give an example of how you set up welcoming environments for families in your classroom.  |
| <b>Professional Development</b>          | <p>What type of professional development trainings would you like to attend? (Check all that apply)</p> <ul style="list-style-type: none"> <li>a. Mental health &amp; well-being</li> <li>b. Supporting school-age children</li> <li>c. Trauma awareness and trauma-informed care principles</li> <li>d. Curriculum</li> <li>e. Information on scholarships to pursue higher education</li> <li>f. None of the above</li> </ul>   |
| <b>Optional</b>                          | <p>What race(s) or ethnicity do you consider yourself? (Check all that apply)</p> <ul style="list-style-type: none"> <li>a. American Indian or Alaska Native</li> <li>b. Asian</li> <li>c. Black or African American</li> <li>d. Hispanic or Latino</li> <li>e. Middle Eastern or North African</li> <li>f. Native Hawaiian or Pacific Islander</li> <li>g. White</li> <li>h. Multiracial/Multiethnic</li> <li>i. Prefer not to answer</li> </ul> <hr/> <p>What is your home language?</p> <p>(Home language: The language spoken at home. It is sometimes called the first, native, or primary language)</p> |



| Section         | Questions   |
|-----------------|---|
|                 | <ul style="list-style-type: none"><li>a. Arabic</li><li>b. English</li><li>c. Farsi</li><li>d. Russian</li><li>e. Somali</li><li>f. Spanish</li><li>g. Mandarin</li><li>h. Cantonese</li><li>i. Vietnamese</li><li>j. Other (comment box)</li></ul> |
| <b>Optional</b> | <p>What is your experience with Early Achievers?</p> <ul style="list-style-type: none"><li>a. Negative</li><li>b. Neutral</li><li>c. Positive</li></ul>   |

