

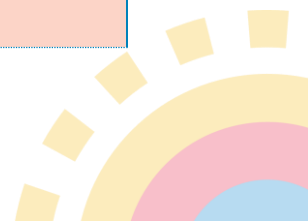


# Program Profile Family Survey 2.0

Section	Questions
<b>Basic Info</b>	Do you have children in more than one classroom?
	What classroom(s) is your child(ren) in?
	What is your child(ren)'s teacher(s) name(s)?
	How long has your child(ren) attended this program? <ul style="list-style-type: none"> <li>a. 6 months or less</li> <li>b. 6 months to 12 months</li> <li>c. 1 year to 3 years</li> <li>d. 3 years to 6 years</li> <li>e. 6 years to 12 years</li> </ul>
	What age range best describes your child's(ren's) age group? (Check all that apply) <ul style="list-style-type: none"> <li>a. Infant (Birth to 11 Months)</li> <li>b. Toddler (12 Months-29 Months)</li> <li>c. Preschool (30 Months-6 years that are not attending kindergarten or elementary school)</li> <li>d. School Aged (5 years-12 years that are attending kindergarten or elementary school)</li> </ul>
<b>My Story</b>	What do you love about your early learning program?
<b>Child Outcome</b>	Does your child have an identified disability (IEP or IFSP)?



Section	Questions
<b>Family Engagement and Partnership</b>	<p>How satisfied are you with the following characteristics of your early learning program? Choose one: Not satisfied, Satisfied, or Very Satisfied</p> <ul style="list-style-type: none"> <li>a. Meeting the individual needs of your child(ren)</li> <li>b. Communication with program staff</li> <li>c. Welcoming environment</li> <li>d. Interactions between staff and children</li> <li>e. Opportunities to interact with other parents</li> <li>f. Curriculum/What children are learning</li> <li>g. Nutritional meals and snacks</li> <li>h. Health and safety policies and procedures</li> <li>i. How the program promotes your child(ren)'s learning and development</li> <li>j. Opportunities to have planned (meetings) conferences with your child(ren)'s teacher</li> <li>k. The variety and quality of learning materials and toys available to your child</li> </ul> <p>How likely are you to recommend your program to other families looking for childcare?</p> <ul style="list-style-type: none"> <li>a. Recommended</li> <li>b. Not Recommended</li> <li>c. Prefer not to answer</li> </ul>
<b>Optional</b>	<p>What race(s) or ethnicity do you consider your child? (Check all that apply)</p> <ul style="list-style-type: none"> <li>a. American Indian or Alaska Native</li> <li>b. Asian</li> <li>c. Black or African American</li> <li>d. Hispanic or Latino</li> <li>e. Middle Eastern or North African</li> <li>f. Native Hawaiian or Pacific Islander</li> <li>g. White</li> <li>h. Multiracial/Multiethnic</li> <li>i. Prefer not to answer</li> </ul>



Section	Questions
<b>Optional</b>	<p>What is your home language? (Home language: The language spoken at home. It is sometimes called the first, native, or primary language)</p> <ul style="list-style-type: none"><li>a. Arabic</li><li>b. English</li><li>c. Farsi</li><li>d. Russian</li><li>e. Somali</li><li>f. Spanish</li><li>g. Mandarin</li><li>h. Cantonese</li><li>i. Vietnamese</li><li>j. Other (comment box)</li></ul>
	<p>Would you like support in understanding the policies and procedures outlined in your early learning program's policy handbook?</p> <ul style="list-style-type: none"><li>a. Yes, I need a lot of support.</li><li>b. Yes, I need some support.</li><li>c. No, I understand the handbook well.</li></ul>

