



Washington State Department of
CHILDREN, YOUTH & FAMILIES

Early Care and Education Facilities Exploration

Presentation to IPEL, March 17, 2025

Allegra Calder, BERK, Barb Rosen, BR Consulting, and Diana Stokes, DCYF



STRATEGY ■ ANALYSIS ■ COMMUNICATIONS



SME Consulting

Agenda

Objectives: Share information about the Early Care and Education (ECE) Facilities Exploration project, outline ways for IPEL members to get involved, and learn from you.

Agenda

- Overview project including team and timeline
- Summarize problem statement and efforts to date
- Introduce engagement opportunities
- Discussion and questions

Project Team



Project Lead



**Allegra
Calder**
Project
Manager



**Madalina
Calen**
Cost
Analysis



Oliver Hirn
Research
Analyst



**Stella
Streufert**
Project
Support



SME Consulting



Barb Rosen
Subject
Matter Expert



Sarah Emmans
Subject
Matter Expert



Washington State Department of
CHILDREN, YOUTH & FAMILIES

Diana Stokes, Access and Living Wage
Manager

Tracy Schreiber, Community Outreach
Specialist

Overview

- As part of its efforts to support universal access to early care and education, DCYF seeks to understand the need for early learning facilities and to overcome identified challenges to development and expansion.
- This exploration expands on Early Care and Education Access and Living Wage Implementation Plan.



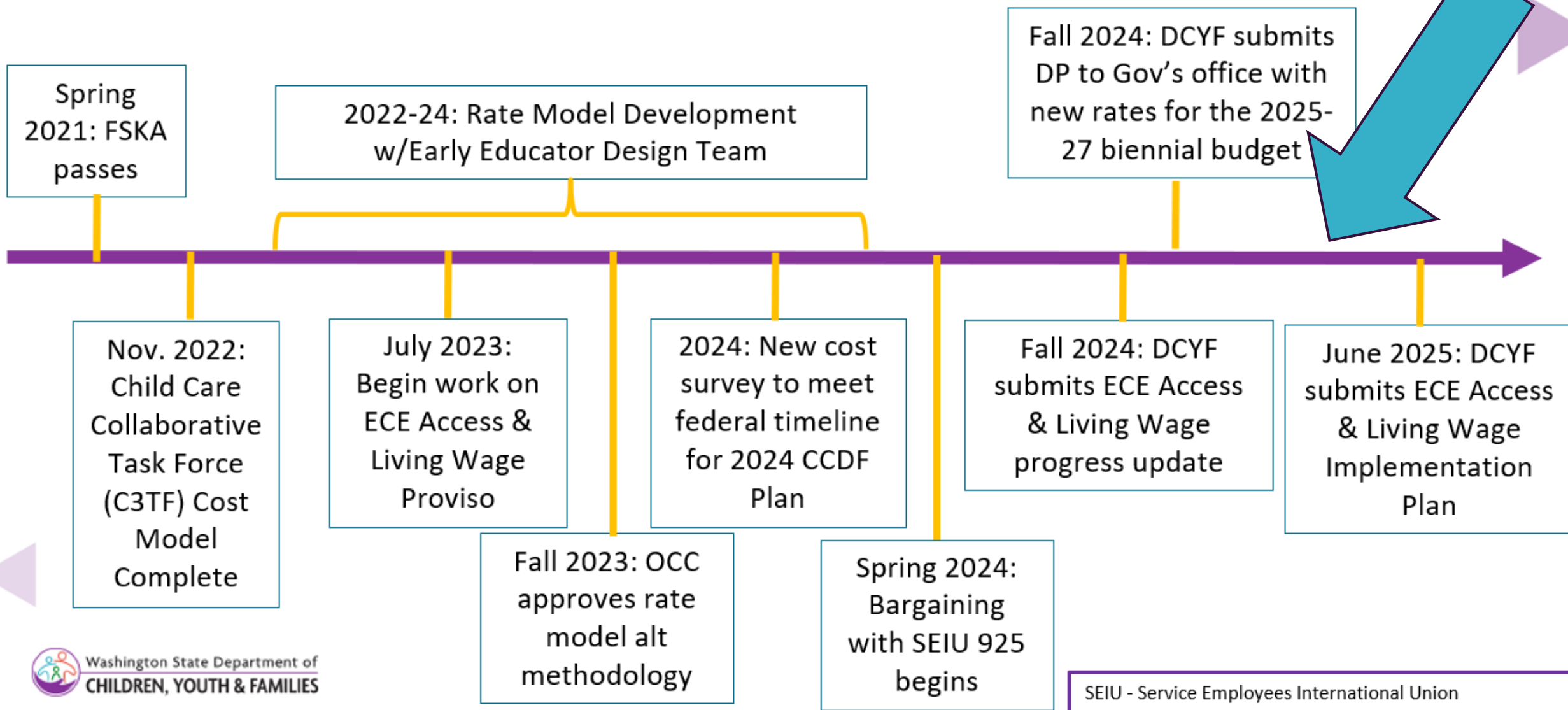
Universal Access and Living Wage

An integrated, mixed-delivery system of affordable (no more than 7% of their income), high-quality early care and education for ALL of Washington's children and providers are provided a living wage and benefits.

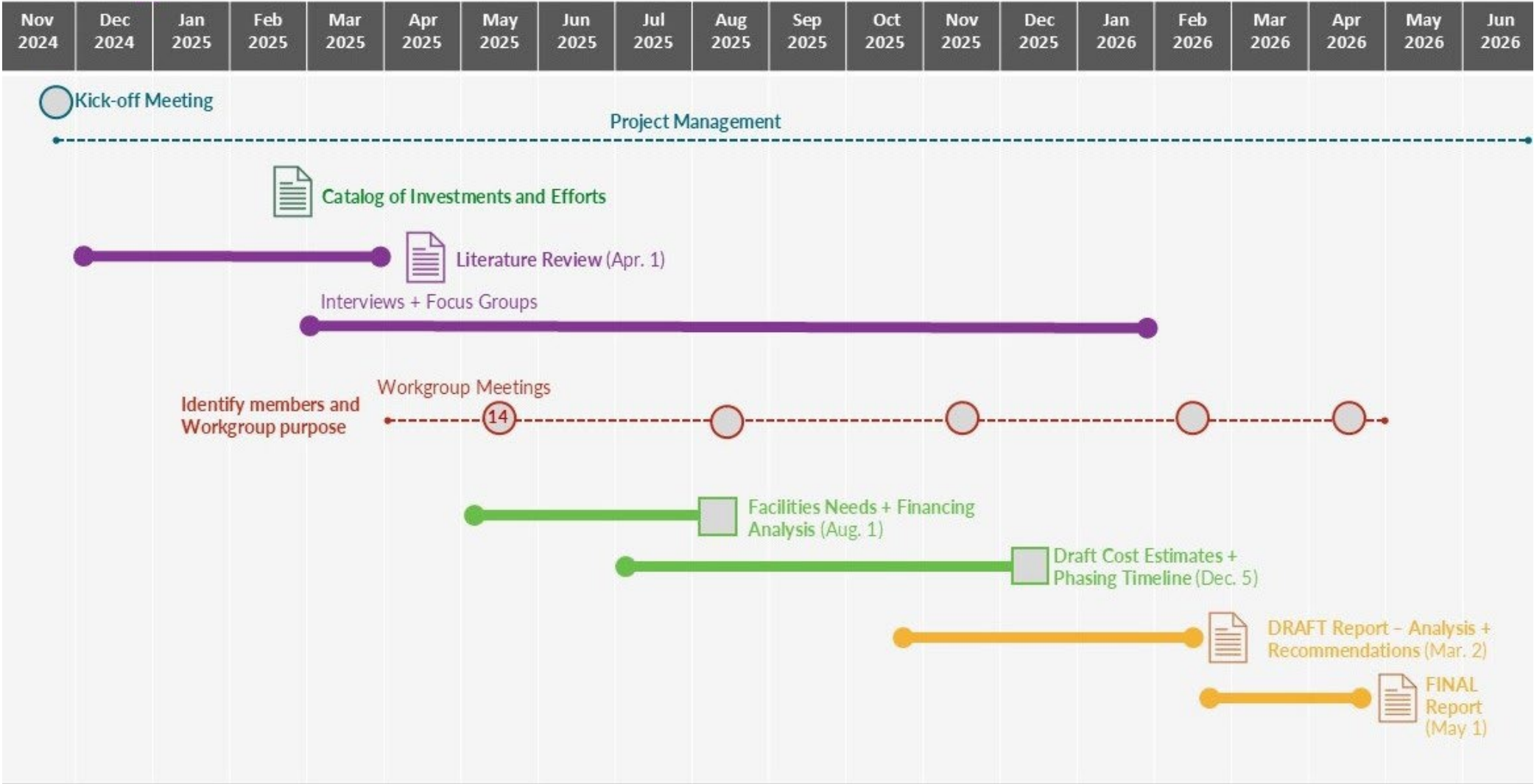
- We are building on the existing foundation to strengthen an integrated, mixed-delivery system of affordable, high-quality early care and education for ALL of Washington's children.
- We have a focus on child outcomes, school readiness, family and provider well-being and self-sufficiency.



Timeline



ECE Facilities Exploration Timeline



Problem Statement

- Considerable investments by Washington State and partners in the form of grants and loans have been added, but challenges remain related to local land use permitting and zoning; reimbursement and match requirements; and technical assistance needs, including language.
- DCYF estimates 302,000 child care slots for children under 5 are needed. Even if each new facility could serve 100 children 3,020 facilities would be required.
- Many of the needed supports and recommendations have been identified here and in other states so a primary question is how to move Washington closer to meeting its goals around expanding access to high quality care.

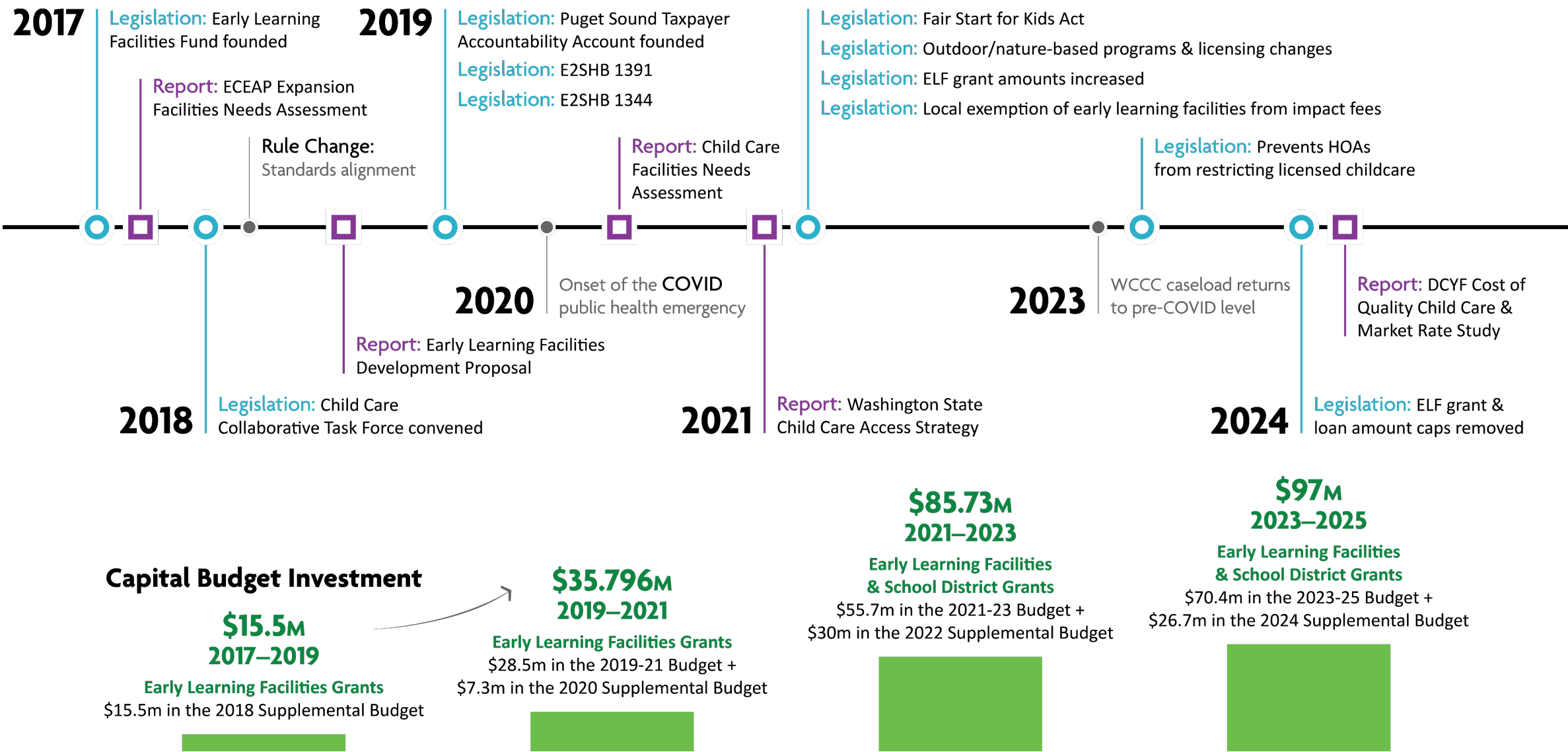
Deliverables include:

- Evaluating needs for facilities across Washington and supports needed (we acknowledge we don't have complete data to communicate the Tribal need)
- Literature Review: exploration of other states policy and investment approaches
- Implementation Plan, including technical assistance, start-up, and other supports
- Facilities Workgroup

Preliminary Recommendations Framework

- Advocacy for child care as public infrastructure
- Regulatory alignment and streamlining
- Capacity building to navigate existing systems and regulations
- Public financing for early care and education facilities (includes adaptive reuse and co-location strategies)
- Reduction in public revenues to incentivize early care and education facilities development (e.g., tax exemptions, fee waivers)
- Alternative ownership and financing models

Major Facilities Milestones



Facilities Workgroup

Charge:

- Serve as a sounding board to stress test ideas and provide high-level guidance to support the project team throughout this study.
- Provide information, recommendations, and review the draft report.
- Examine the challenges and solutions from the perspective of:
 - What do child care providers need to be successful with facility development, expansion, and conversion?
 - What do subject matter experts in Washington's communities need when they receive questions or requests for technical assistance related to child care facilities?

Time Commitment:

- 5 virtual meetings of 3 hours each between May 2025 and April 2026

Invited Member Organizations

- DCYF
- Association of Washington Cities
- Child Care Aware of Washington
- City of Seattle
- Design for Early Learning
- Early Learning Advisory Council (ELAC)
- Enterprise Community Partners
- Environmental Works
- Imagine Institute
- Indian Policy Early Learning Committee (IPEL)
- King County
- OSPI
- Rural Resources Community Action
- School's Out Washington
- SEIU 925
- Spokane School District
- StartEarly Washington
- WA State Association of Counties
- WA State Department of Commerce

Ways to Engage

- **IPEL Representation on the Workgroup** – ideally participants have experience developing or renovating a child care space
- **Individual or Group Interviews** – we are happy to meet at your convenience to discuss your perspectives, experience with, and questions related to child care facilities

Stipends are available for participation (up to \$200)

Discussion

- What are the biggest facilities related challenges in your community?
- How do Tribal nations interface with local zoning and planning?
- Are there available spaces (community centers, meeting halls) that could be converted to child care if you had the funds to renovate?
- What do we need to consider about braided funding streams specific for Tribal services related to facility development?
- Is there interest in your community in outdoor nature-based child care?
- What else is on your mind related to development and renovation of early care and education facilities?

Thank you!

Please reach out to allegra@berkconsulting.com with any additional comments or questions.