

Keeping Families Together Act

Effective July 1, 2023

Quarterly Data Update

January 2025

www.dcyf.wa.gov



Washington State Department of
CHILDREN, YOUTH & FAMILIES

What we're seeing:

- The law is meeting the intended impact of reducing removals
- We are not removing as many children at high risk of future encounters with child welfare, and those children are more likely to remain with their families and communities.
- Internal reviews of Safe Child Consultations indicate that we are taking additional steps to prevent removal of a child and to support a safety plan for the family
- The overlap between 1227 and Plan of Safe Care is reducing screened in intakes involving substance-exposed newborns
- Fentanyl crisis leaves many children at risk
- A lack of SUD treatment services and other community-based supports for families places children at further risk



Long-term trends:

- Between state fiscal year (SFY) 2018 and the implementation of HB1227 at the end of SFY2023, Washington saw a 35.6% decrease in the number of children in out of home care (point in time). This trend is largely consistent with the national trends on children in out of home care.
- Since 2020, DCYF has seen an increasing percentage of moderately high to high-risk cases being re-referred to CPS intake and screening-in (within 90 days of the completion of the risk assessment.)
- Since 2019, opioid-related emergencies have dramatically increased for the entire population (both adults and children) in Washington.

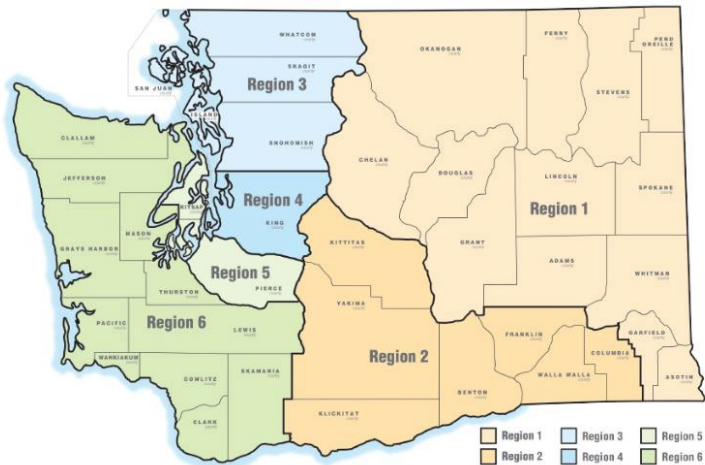
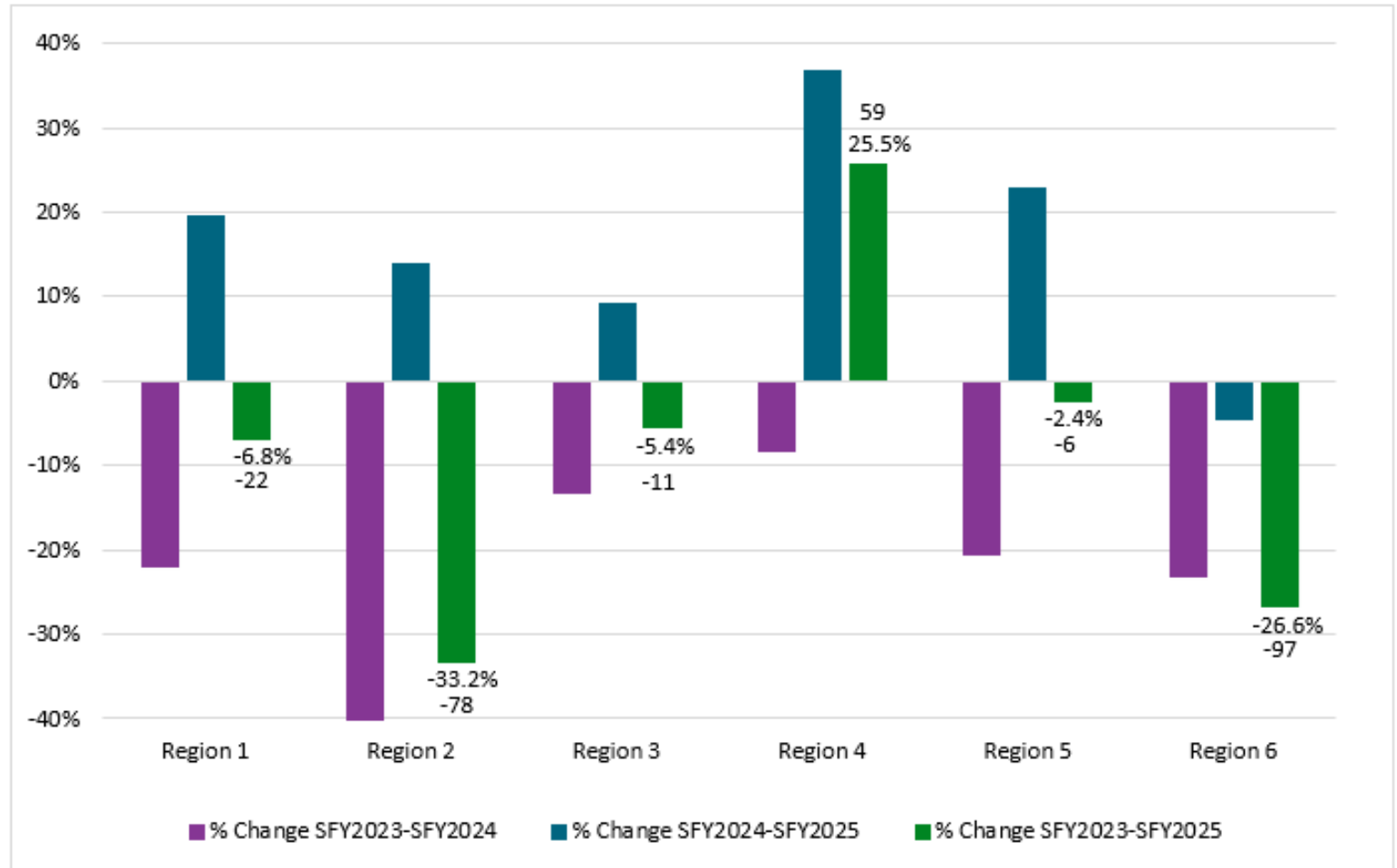


Entries into care have decreased by 16.5% since the new law went into effect

SFY2023-2025 Percent Change in Children Entering Care by Region, July 1-December 31

Statewide:

- Yakima has shown a 38% reduction in removals since 7/1/23
- While King County has shown a decrease in removals since SFY 2024 they are still removing a higher percent than SFY 2023.



While entries into care have increased since last year, they continue to be lower than before the Keeping Families Together Act was implemented. Families served through FVS continue to increase.

All Entries Into Care

	July 1 - Dec 31, 2022	July 1 - Dec 31, 2023	July 1 - Dec 31, 2024
Voluntary Placements	272	257	212
Protective Custodies	789	676	774
Court Approved Placements	560	324	474
TOTAL REMOVALS	1,621	1,257	1,460

Cases Receiving Services

Family Voluntary Services	1,047	1,174	1,257
---------------------------	-------	-------	-------

*2023/25 data are observed, not adjusted for known data lag, so may increase somewhat as more case data are entered into FamLink

** Family Voluntary Services identifies the distinct count of families served by FVS during the time frame identified

The largest number of reductions in out of home placement entries are among infants

Total Fewer Children Entering Care by Age Group

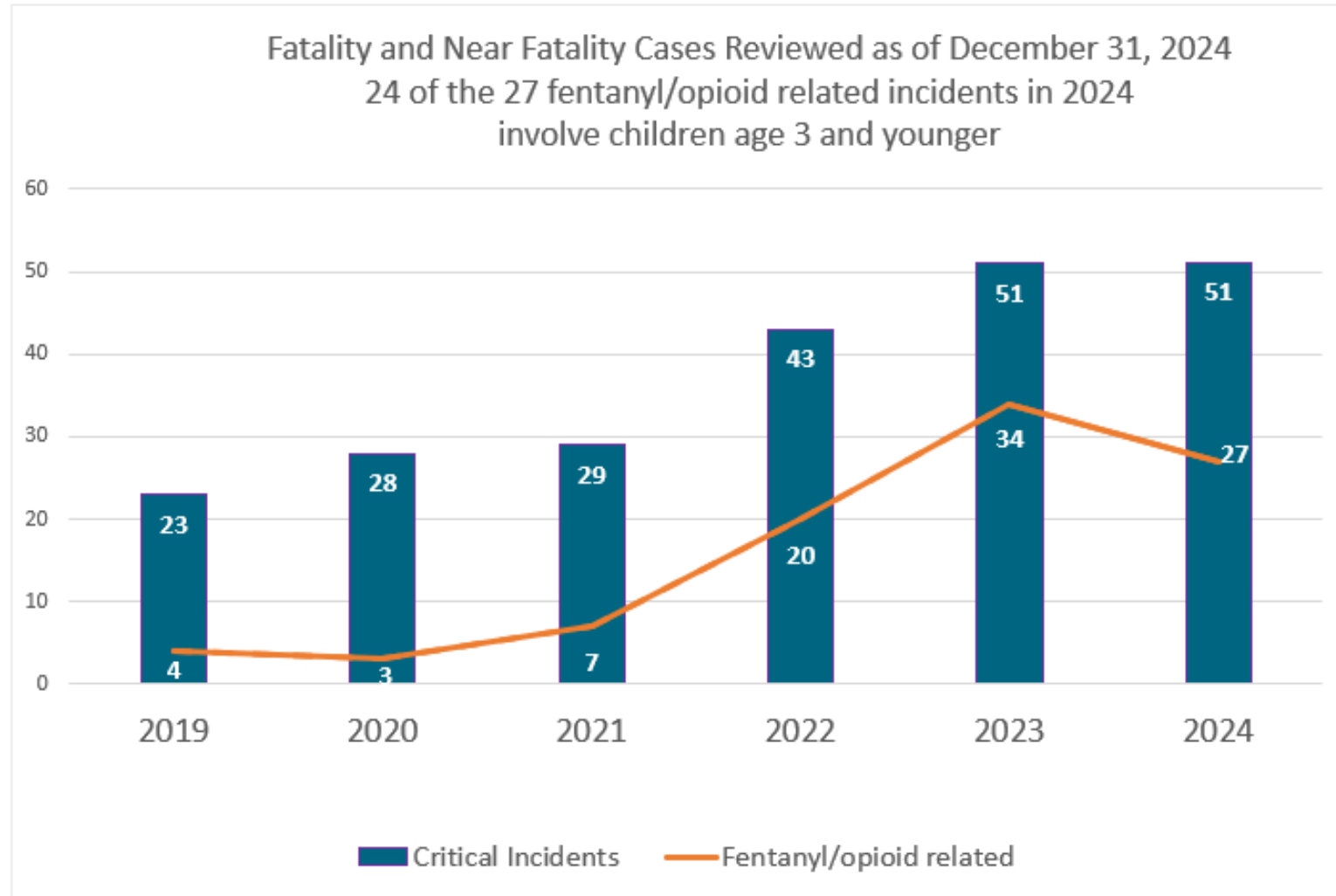
July 1 – Dec 31, 2022, compared to July 1 – Dec 31, 2024

	Number (n)	Percentage (%)
Age 0-1	-90	-15.3%
Age 2-3	33	18.6%
Age 4-11	-52	-10.2%
Age 12-17	-54	-15.8%

Number identifies the change in children entering care for this period, since SFY 2022

Percentage identifies the reduction seen in this age group for this period, since SFY 2022

Fentanyl continues to be a major cause of critical incidents among children in Washington State



FENTANYL/OPIOID RELATED CRITICAL INCIDENT REVIEWS

