

Early Learning Facilities (ELF) Program Overview

Matt Mazur-Hart, Community Facilities Manager
Community Capital Facilities Unit

NOVEMBER 14, 2022



Washington State
Department of
Commerce

Background

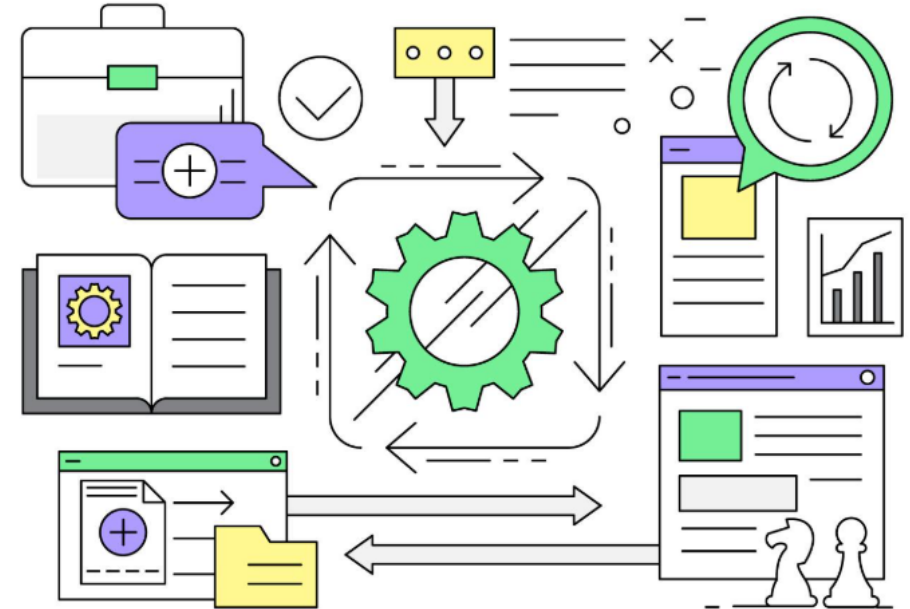
The Early Learning Facilities (ELF) Program was established in 2017 to provide grants to construct, renovate, or acquire property to expand early learning capacity throughout the state.



The Legislature created the program to develop early learning facilities for low-income children to help meet the legal mandate of providing early learning to all eligible children by 2026.

Eligible Costs

- Construction costs
- Feasibility planning
- Project design
- Externally sourced construction management
- Acquisition

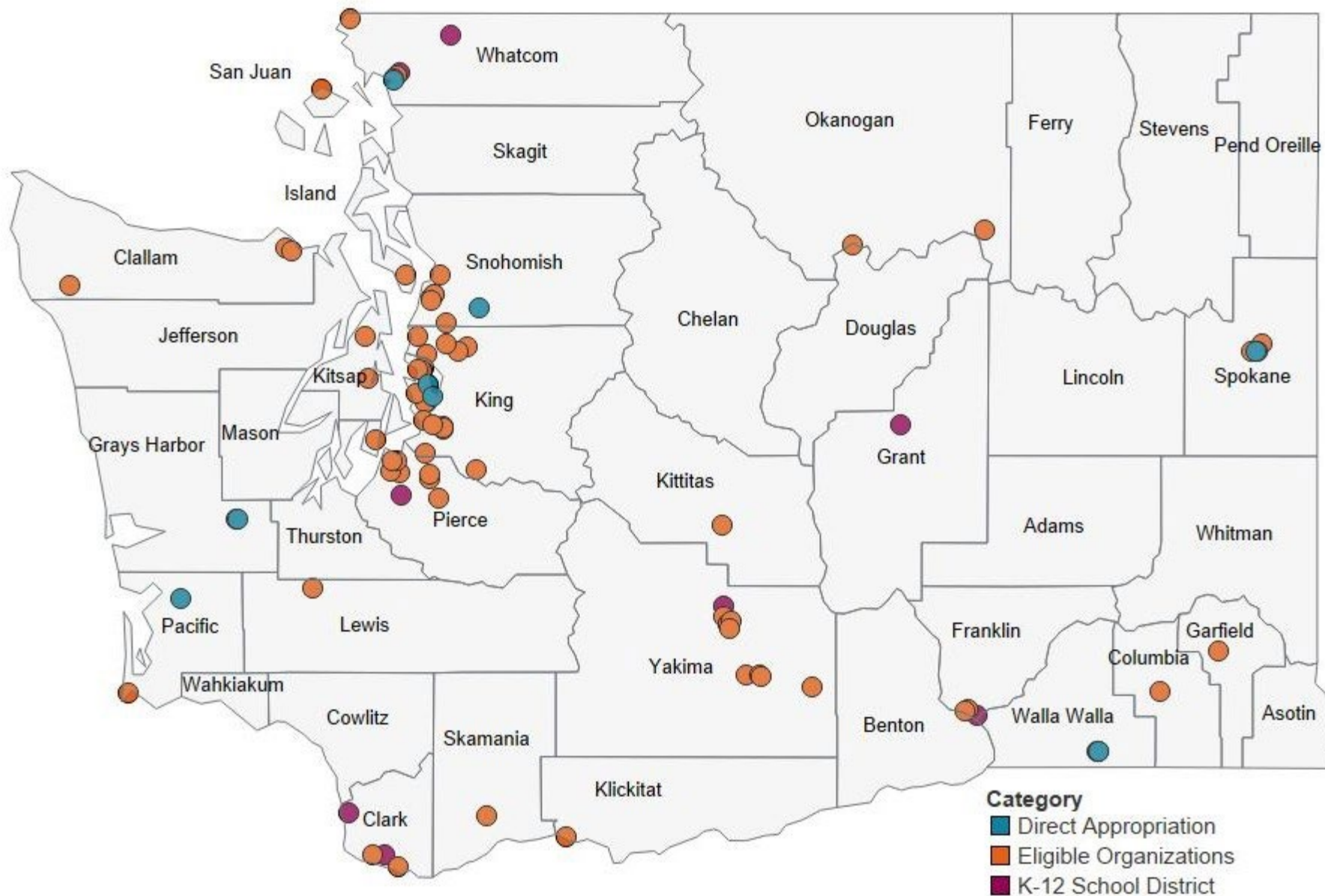


2021-23 Capital Budget Highlights



- \$43.28 million for ELF grants
- \$28.522 million for minor renovation grants
- \$4.72 million for K-12 school district grants
- \$7.5 million for the Washington Early Learning Loan (WELL) fund
- \$1.88 million to DCYF for technical assistance to ELF applicants

2021-23 Early Learning Facilities Awardees



Program Overview

Eligible Organizations

- Family child care homes, child care centers, community and technical colleges, educational service districts, local governments, tribes, affordable housing developers, and school districts

The ELF Program has three separate funding categories:

- Major Construction / Renovation (limit \$1,000,000)
- Minor Renovation (limit \$200,000)
- Pre-Design (limit \$20,000)

10 year commitment period



ELF Program Goals and Scoring Criteria

- Projects providing more new spaces for ECEAP and/or WCCC
- Projects located in low-income neighborhoods, child care deserts, and/or rural areas
- Project readiness
- Projects that leverage non-state resources
- Projects supporting cultural responsiveness
- Projects co-located with affordable housing



Photos of Smokey Point Daycare Project in Marysville

Before



After



“Being a Grant recipient and successfully completing the project was no easy task, but the process was straight forward. We would not have been able to expand early learning to additional families, specifically those furthest from early learning opportunities, had it not been for the ELF Grant. Our community is grateful!” – Kathy Carman, Owner

Estimated Funding Round Timeline

- Next funding round for all providers other than school districts is expected to open in the fall of 2023
- See our website for more program information and sign-up to be notified of ELF Program announcements

<https://www.commerce.wa.gov/building-infrastructure/capital-facilities/early-learning-program/>

E-mail Updates

To sign up for updates or to access your subscriber preferences, please enter your contact information below.

*EMAIL ADDRESS

SUBMIT

Thank you!

Matt Mazur-Hart

COMMUNITY FACILITIES MANAGER

Matt.mazur-hart@commerce.wa.gov



Washington State
Department of
Commerce

www.commerce.wa.gov

