

PCJJ

Raise the Age Workgroup

Co-Leads: Drew Hill and Heidi Sadri
Jan. 8, 2025 | 2-4 PM | Microsoft Teams

This meeting will be recorded.

To turn on captioning in Teams:
Click More > Language & Speech > Turn on live captions

Agenda

- 2:00** Welcome & Introductions
- 2:15** Project Status Updates
- 2:30** Focus Group Reports & Discussion
- 2:50** Interim Preliminary Findings Presentation: Evans Policy Innovation Collaborative Asset Mapping Project
- 3:30** Preview Youth Art for Report
- 3:35** Draft Outline Review
- 4:00** Conclude

Project Status

January	February
<ul style="list-style-type: none"> • Draft outline review • Workgroup meeting: Asset mapping presentation (EPIC) • Optional benefit-cost analysis office hour with EPIC • Case data from AOC available - delayed • Caseload estimates drafted (EAJP) - impacted • Benefit-cost analysis framework drafted (EPIC) 	<ul style="list-style-type: none"> • Full report drafting • Subgroup meetings: Benefit-cost analysis review and input
March	April-June
<ul style="list-style-type: none"> • Drafts complete (EPIC) - impacted • Draft report review • Workgroup meeting: Benefit-cost analysis presentation 	<ul style="list-style-type: none"> • Final edits and formatting • Reviews: PCJJ, DCYF, OFM • Submit and publish!

Bold = Workgroup Action
 EPIC = Evans Policy Innovation Collaborative
 EAJP = Emerging Adult Justice Project

Requests for Review

- Review and provide feedback on outlined recommendations
- Review and provide feedback on juvenile vs. adult system comparison summary
- Provide feedback and suggestions to Evans Policy Innovation Collaborative

Request sent by email. Please review by Monday, January 13!

Focus Group Reports

Completed Discussions

- May: **Capitol Classroom at Green Hill**
- June: **Justice for Girls Advocacy Program at Echo Glen**
- October: **CHOOSE 180 Youth & Young Adult Advocacy Program**
- November: **Washington Corrections Center for Women**

- Ongoing: **Discussion and collaboration with individuals**

Highlights: Capitol Classroom at Green Hill

- Discussion about brain development and jurisdiction is also an important opportunity to make recommendations about eliminating decline.
- Facilities are at capacity – don't just widen the net. We need to have and use prevention and alternatives to incarceration (guidance, mentorship, diversion, community custody, community facilities).
- Emerging adult needs especially include concrete skill-building, future planning, and resource navigation.

Highlights: Justice for Girls Advocacy Program at Echo Glen

- Raise the Age and decline: A 16-year-old eligible for decline and a 20-year-old *both* should be perceived as a juvenile. It is unfair and shocking to be told you are an adult. Passage of Raise the Age legislation would open the door for decline laws to change.
- Raise the Age is similar to Extended Foster Care in that it smooths the transition into adulthood and allows needed supports and chances to be provided to young people.
- An 18-year-old feels much safer around their younger peers than in adult county jail.
- If brain science tells us development continues through age 25, why does Raise the Age only consider through age 20?

Highlights: CHOOSE 180 Youth & Young Adult Advocacy Program

- The vision for young adults is similar to the vision for youth/teens: Both need to build real-world skills and learn how to navigate life independently. No one has it all figured out at 18.
- Does the current cutoff being at 18 benefit powerful people or institutions at the expense of young people?
- 21 is still too low for Raise the Age.



About the CHOOSE 180 Youth & Young Adult Advocacy Program

Highlights: Washington Corrections Center for Women

Organizers/facilitators: Sunshine Timmons and Maryanne Atkins

- More care, help, support, resources in the juvenile system; the adult system is unsympathetic, dangerous, exposes you to negative behavior; everything costs money in DOC.
- The age needs to be updated as research and society evolve; give young adults an important chance to change their lives and mature before being caught in the adult system (adult records); young people are prone to messing up at this age and it shouldn't ruin their future
- Age 25 would be better
- Concern about housing youngest and oldest together in same facility
- Specific to girls & women: May be pregnant or have children, be experiencing abuse, especially vulnerable, coercive relationships and co-offending

18, 19, & 20 year olds are an asset to the community because they have the most potential. This would be more positive than negative because they would be able to get more resources & help rather than be thrown into the adult system where they will not receive any support & will be further criminalized & likely to re-offend.

Discussion

Where do our focuses and recommendations align with this input?

Where can we more responsive to these priorities in our reporting and recommendations?

Capitol Classroom at Green Hill

- Relationship to decline and automatic adult court jurisdiction
- Prevention and alternatives to incarceration
- Skill-building needs specific to emerging adults

Justice for Girls at Echo Glen

- Relationship to decline and automatic adult court jurisdiction
- Provide supports to smooth the transition into adulthood
- Why not age 25?

CHOOSE 180 Youth & Young Adult Advocacy Program

- Emerging adults and younger teens both need real-world skill-building support
- Why stop at 21?

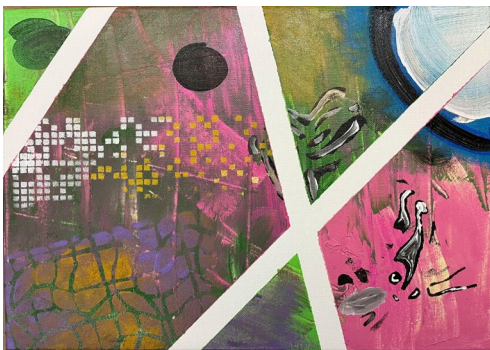
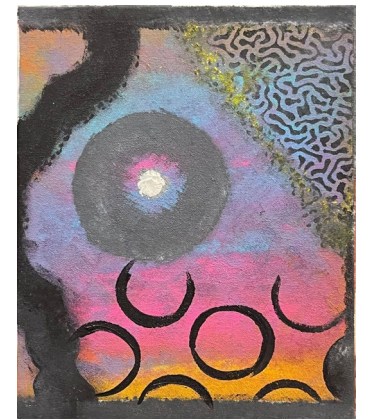
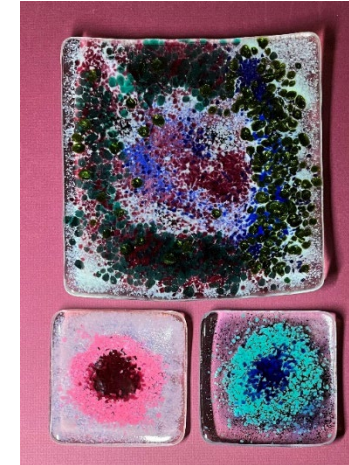
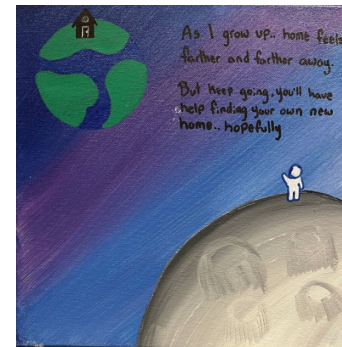
Washington Corrections Center for Women

- Important differences between juvenile and adult systems
- Supportive of Raise the Age, but 25 would be better
- Age range in facilities
- Circumstances unique to women and girls

Asset Mapping Project: Interim Preliminary Findings

Cali Jahn & Mackenzie Crampton
Evans Policy Innovation Collaborative

Sneak Peek: Youth Art for Report



Vote by email for our featured cover art!

Draft Review

Next Full Workgroup Meeting:
Wednesday, March 12, 2025 | 2 PM

Policy Studies website | Contact: heidi.sadri@dcyf.wa.gov
Sign up to receive updates on the PCJJ Policy Studies