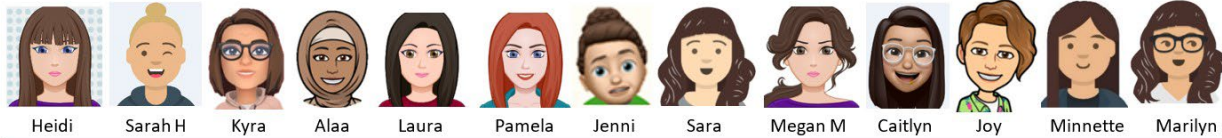


Strengthening Families Washington



Strengthening Families



Home Visiting

*Our animated team
Thank you for letting us join you today!*



We hold in our work:

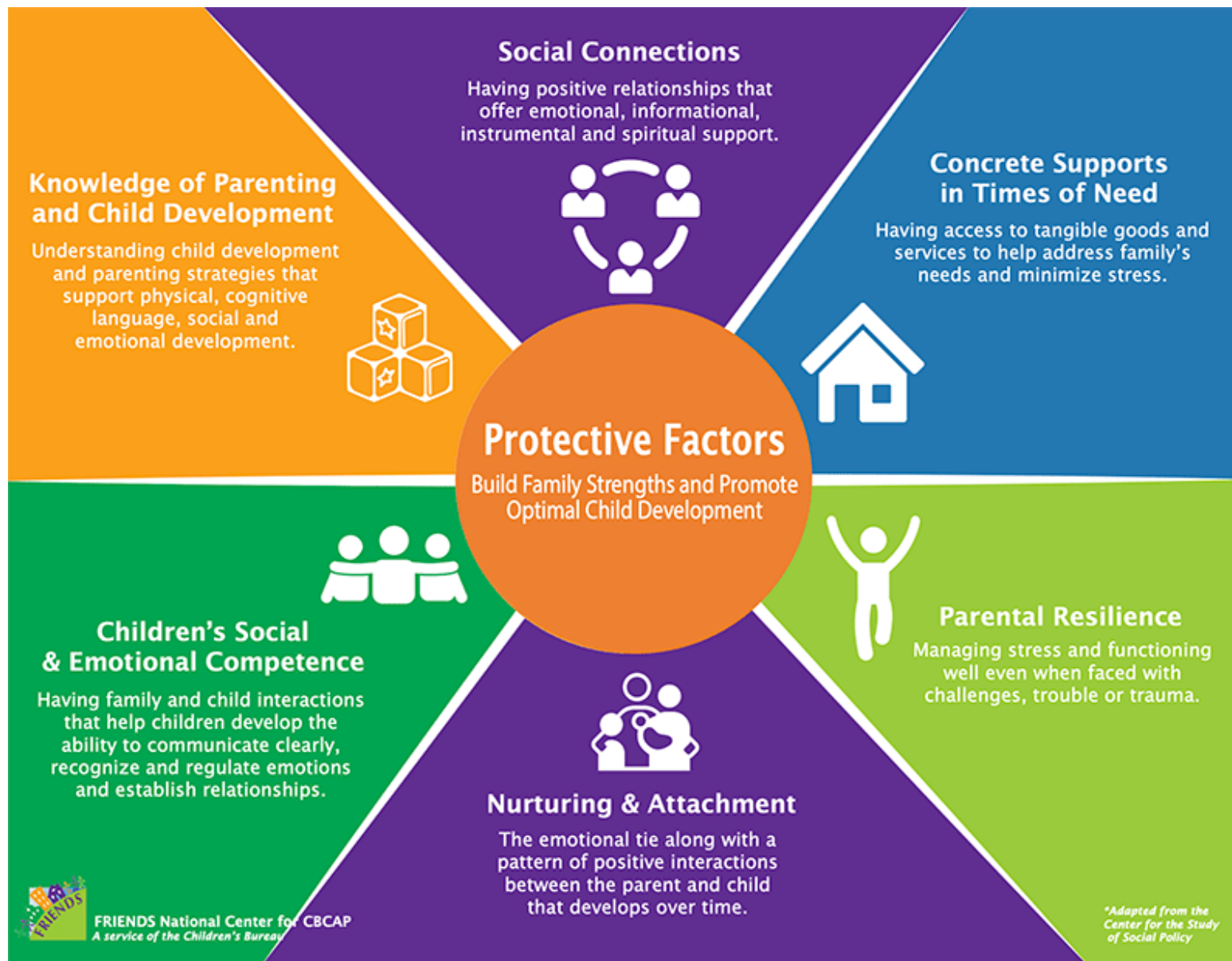
Families are the most
central, powerful and enduring
influence in children's lives.



Strengthening Families WA Purpose

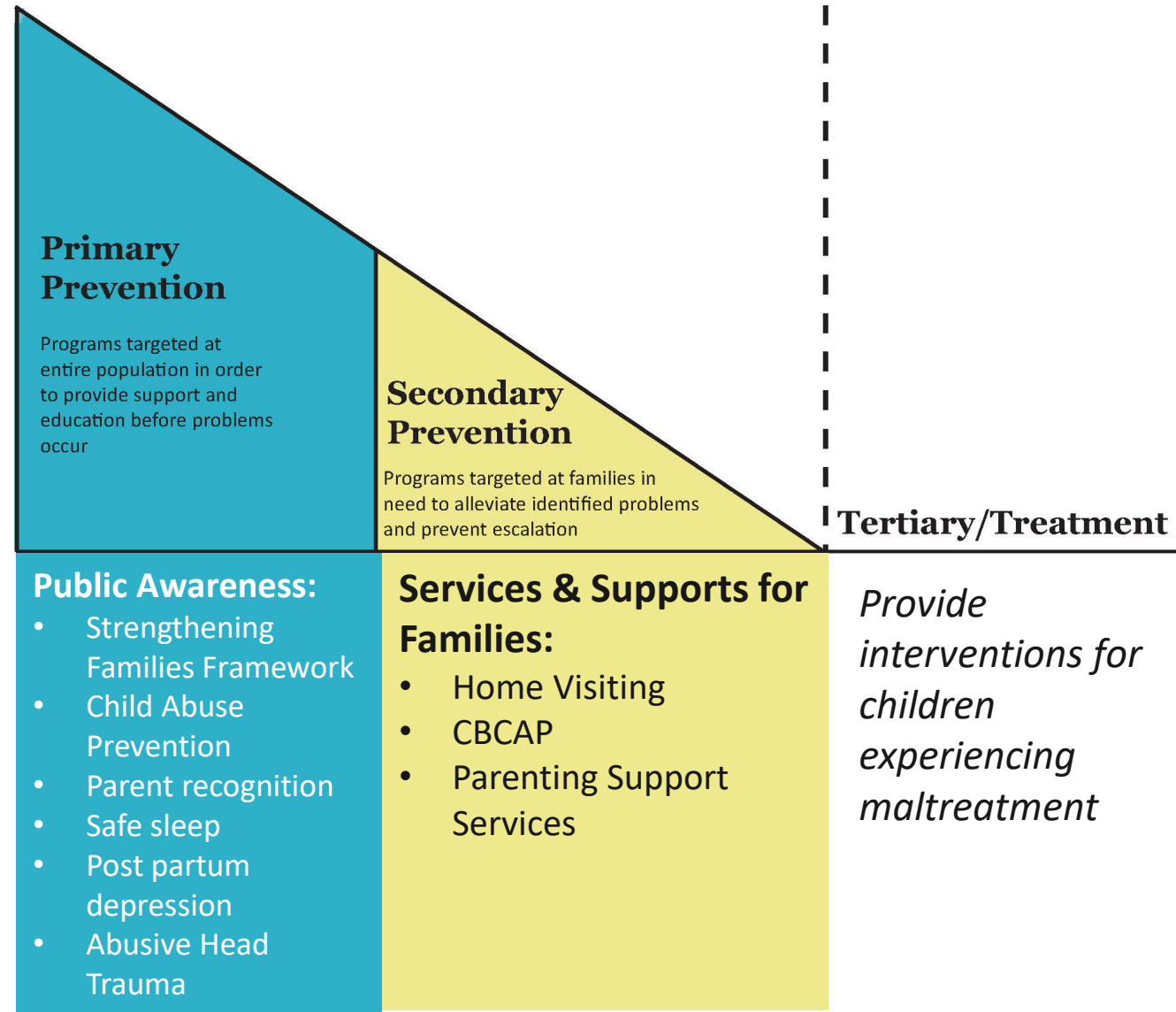
- Build awareness to catalyze change in social norms.
- Build and leverage partnerships, change policy and systems.
- Engage families and communities to identify and build on strengths.
- Utilize research and data to understand factors associated to child maltreatment.
- Implement and support a range of high quality initiatives, programs and services.





Child Abuse Prevention

A Primary and Secondary Prevention



Community-Based Services

- Concrete Goods and Economic Supports
- Capacity Building Efforts:
 - Perinatal Mental Health – Group Peer Support
 - Community-Based Family Supports
 - Family Resource Centers
 - Fatherhood Initiatives
 - Crisis and Respite Care
- Community-Based Home Visiting
- Navigation Systems and Supports: Child Welfare Early Learning Navigators and Help Me Grow
- Service Array: <https://dcyf.wa.gov/sites/default/files/pdf/HV-ArrayServices.pdf>



SFWA/Parent Partnership

- Parent Recognition Month – February
 - Unsung Heroes campaign
- Child Abuse Prevention Month – April
 - Pinwheels for Prevention
- Funding opportunities
 - Reviewing applications and proposals
 - Incorporated into our funded programs
- Children’s Trust Fund Alliance
 - WA State parent on national council
 - Training for PAG



*Reimbursement is provided for parents participating in our prevention efforts.



Resources & Tools for Families

If you are looking for information about additional resources or supports available, here are some helpful guides and directories:

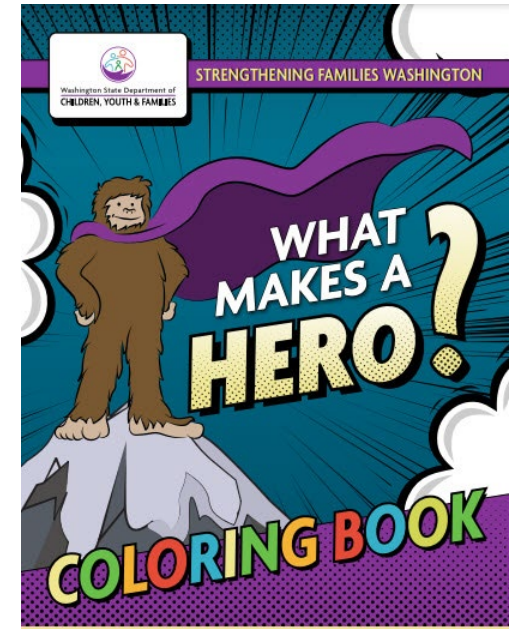
[The Resource Guide PDF.pdf \(wa.gov\)](#)

[Search | Within Reach \(helpmegrowwa.org\)](#)

[Search | Within Reach \(parenttrust.org\)](#)

[Resource Directory | Washington 211 \(wa211.org\)](#)

If you are looking for information about a specific resource or support need for you or someone you know and would like to meet with someone from DCYF, please reach out to Caitlyn Ishikawa (caitlyn.ishikawa@dcyf.wa.gov).



Any Questions

Feel free to come off mute or chat any questions or comments into the chat.



Thank you!

Contact:

Laura Alfani, SFWA Administrator

Laura.Alfani@dycf.wa.gov

Jenni Olmstead, Prevention Lead

Jenni.olmstead@dycf.wa.gov

strengtheningfamilies@dycf.wa.gov

