

Group Care Information Forum

Teams

NRM Team

Original Date: May 1, 2025

Licensing Division | Approved for distribution by Jason Churchwell, Workforce Development Administrator

www.dcyf.wa.gov



Washington State Department of
CHILDREN, YOUTH & FAMILIES

Welcome

*Group care providers:
Please include your name
and agency in the chat.*



What We'll Cover Today

Background on Negotiated Rule Making (NRM)

WAC Updates

Strength-Based Approach and Collaborative Compliance

“Why” Behind WAC Changes

Group Care WAC Training Walk-Through

Transition Planning for New WAC

Q&As



Introductions: Licensing Division Group Care Leadership

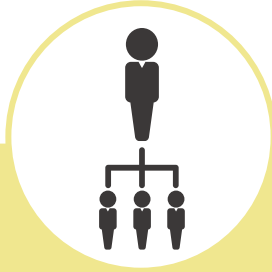
- Maria Tovar, LD SAM/Group Care Deputy Sr. Administrator
- Joe Rissone, Group Care Administrator
- Melissa Fielding, Group Care Licensing Supervisor
- Maureen Mahannah, Group Care Licensing Supervisor
- Enrique Guillen, Group Care Licensing Supervisor



D.S. History and Overview



Filed in 2021



D.S.
Initials of One
Plaintiff



Issues and
Deficiencies



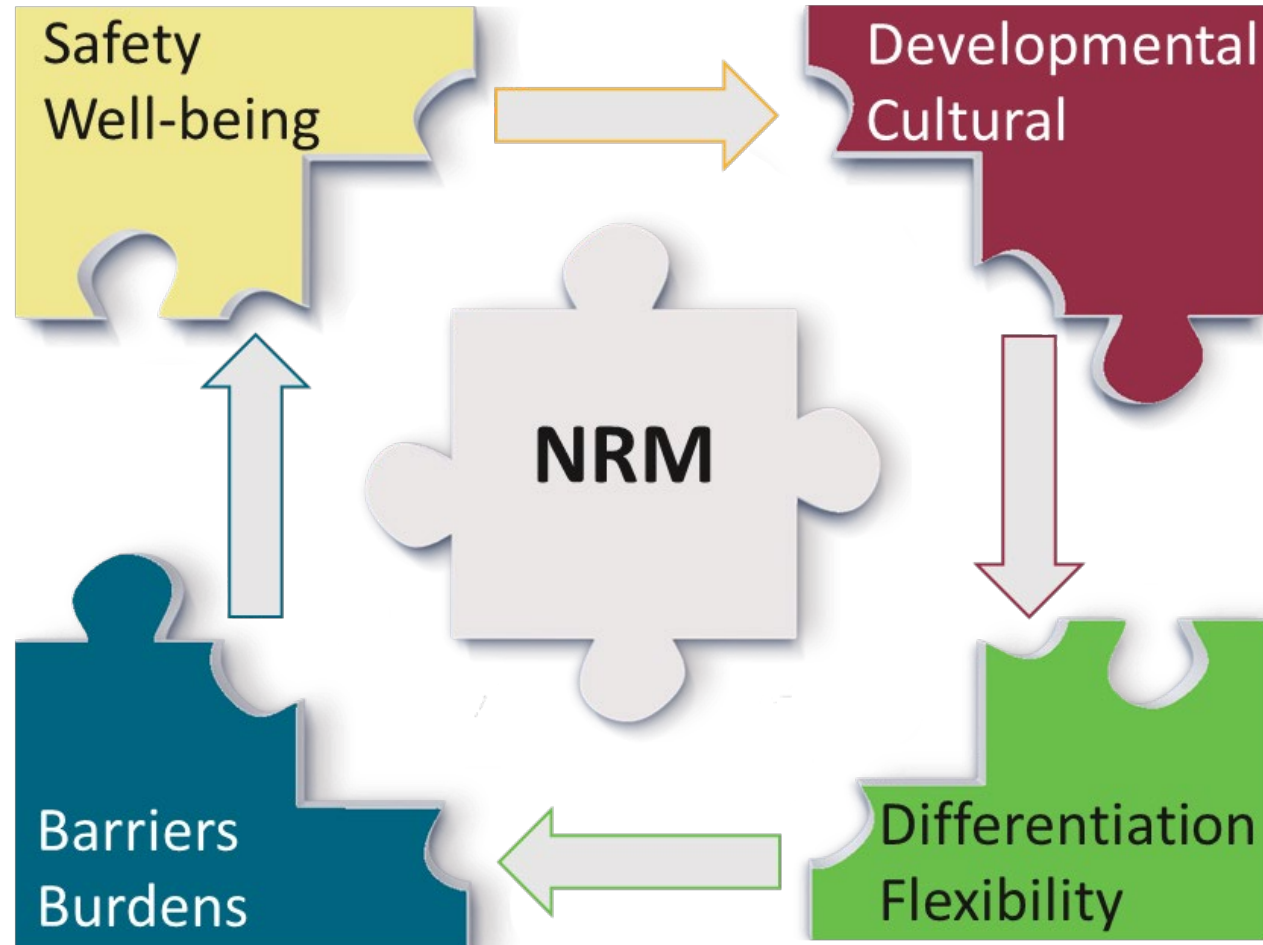
Agreement
Reached in
September
2022



8 System
Improvements



NRM Principles

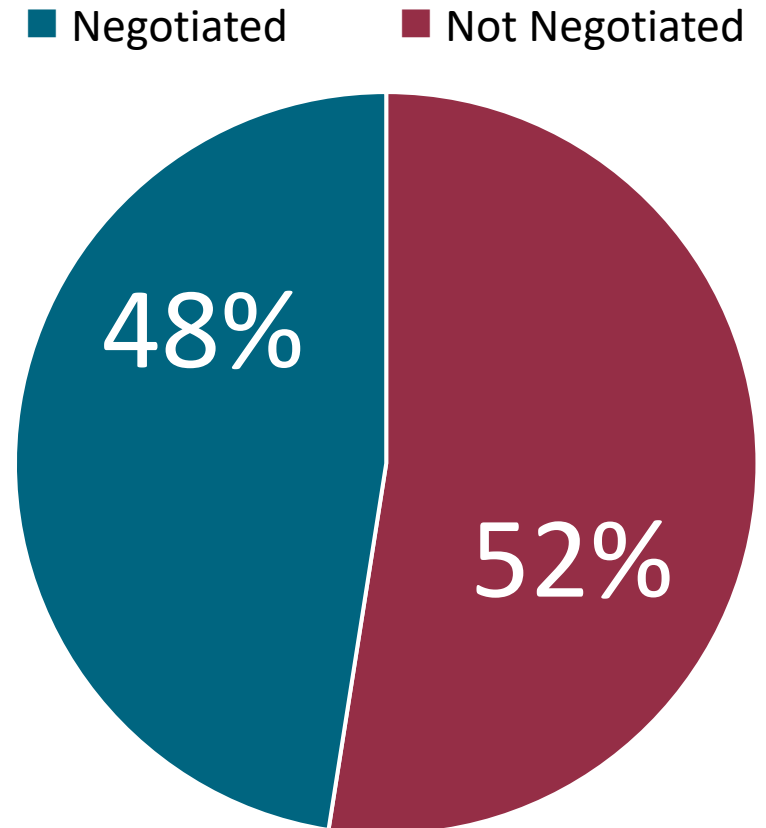


Group Care WAC Overview

Group Care WAC Breakdown:

- Negotiated: 86 WAC (48%)
- Not negotiated: 95 WAC (52%)

Note: These numbers total to the 181 WAC included in WAC chapter 110-145 (i.e. 110-145-1420 “Who must I employ at my facility?”)



WAC Amendments



New Requirements*:

- Children and Youth Belongings
- Individualized Plans
- Education Advocacy
- Records Confidentiality
- Training Requirements
- Youth Voice
- Well-Being File

**These requirements are driven by the D.S. Settlement.*

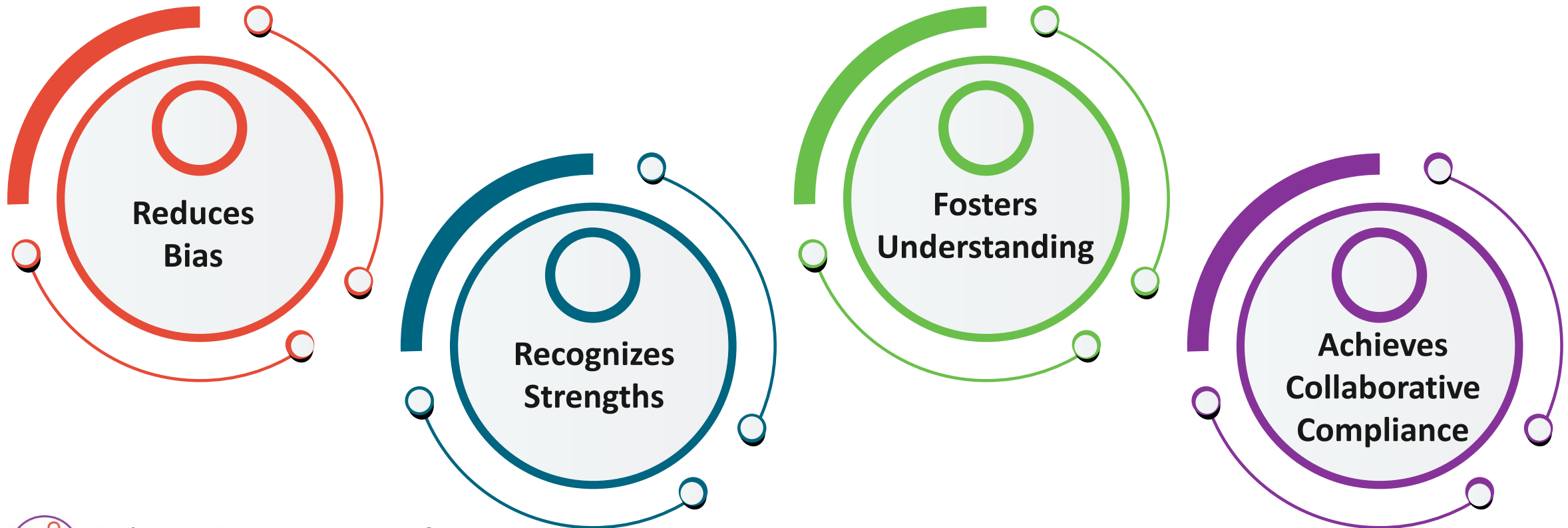
Introduction: Strength-Based Approach & Collaborative Compliance



Strength-Based Approach

What is a **Strength-Based Approach**?

An engagement and communication process that:



Collaborative Compliance

What is **Collaborative Compliance**?

Achieving compliance utilizing a Strength-Based Approach with an emphasis on:



Shared
Decision
Making



Encouraging
Innovation



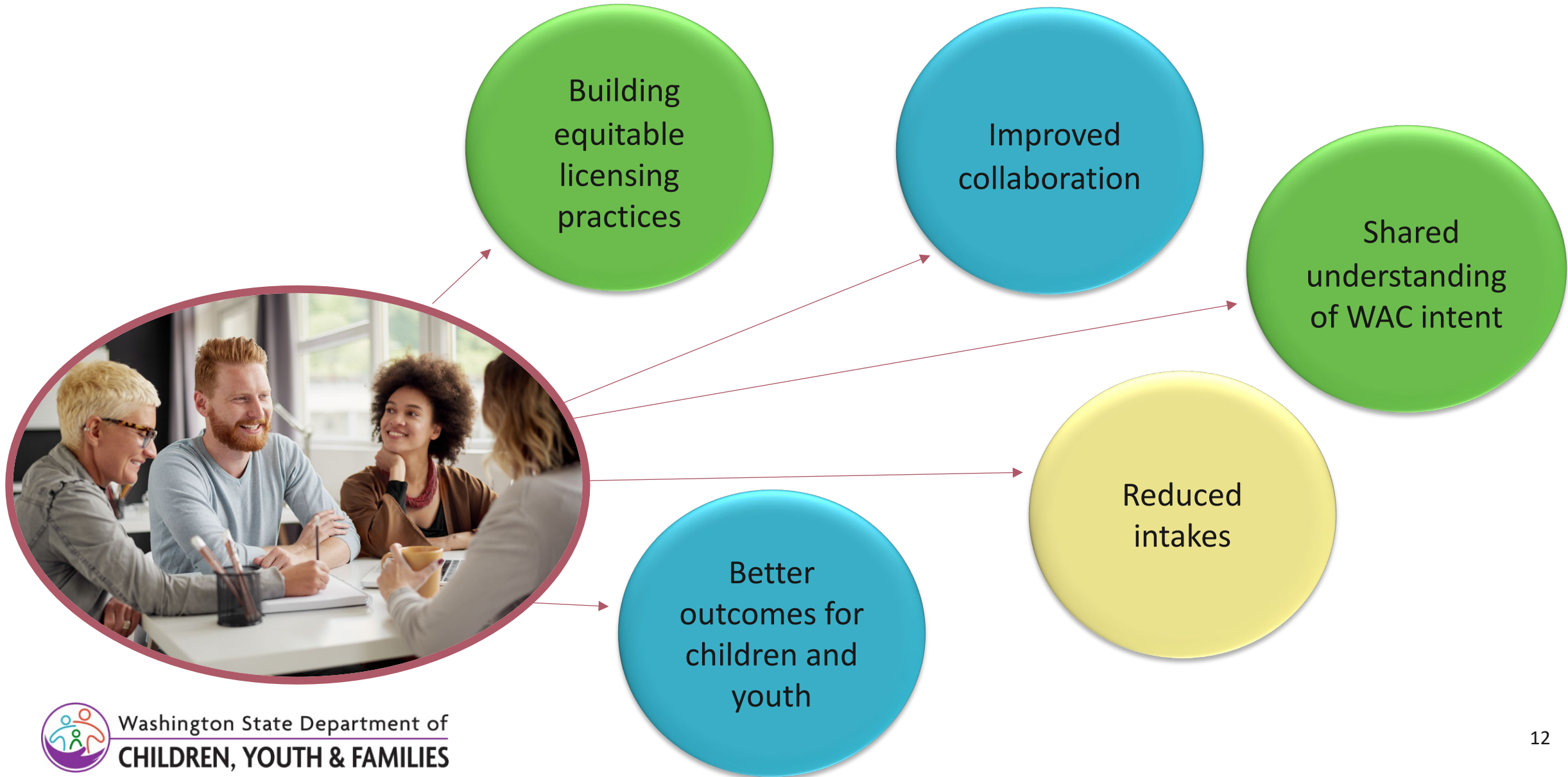
Empowering
Licensees as Experts



Embracing
Perspective &
Critical Thinking



The “Why” Behind the Changes



Group Care NRM Project Milestones

Winter 2025	<i>WAC review</i>
Spring 2025	<i>Public Comment</i>
Summer 2025	<i>New WAC posted to website, but not live</i>
Winter 2026	<i>New group care rules go live</i>



Group Care WAC Training Walk-Through

May	June	July/August	September	October	November	December
1. Assessment and Regulation Culture (6 hrs.) – In Service (virtual)	2. Purpose and Fundamentals (45 min.) 3. Licensing Scope and Highest Standard (30 min.) 4. Licensing Process and Department Access (45 min.) 5. Understanding Compliance, Monitoring, Regulation, and Provider Rights (45 min.)	6. Records and Reporting (30 min.) 7. Health Practices and Medication Management (4 hrs.)	8. Environmental and Safety Preparedness (30 min.) 9. Physical Environments – Standards for Safe and Developmentally Appropriate Settings (60 min.) 10. Personnel Qualifications and Duties (60 min.) 11. Professional Development and Training Requirements (30 min.)	12. Daily Practices that Support Child and Youth Safety and Well-Being (6 hrs.)	13. Service Planning that Supports Positive Child and Youth Outcomes (3 hrs.) 14. Additional Requirements by License and Service Type (30 min.)	15. Field Practice and Procedure (6 hrs.)
1. Assessment and Regulation Culture (6 hrs.) – Providers						
6 hours total training time	2.75 hours total training time	4.5 hours total training time	3 hours total training time	6 hours total training time	3.5 hours total training time	6 hours total training time

Total Training Hours:	31.75 hours (internal)
	25.75 hours (external partners)

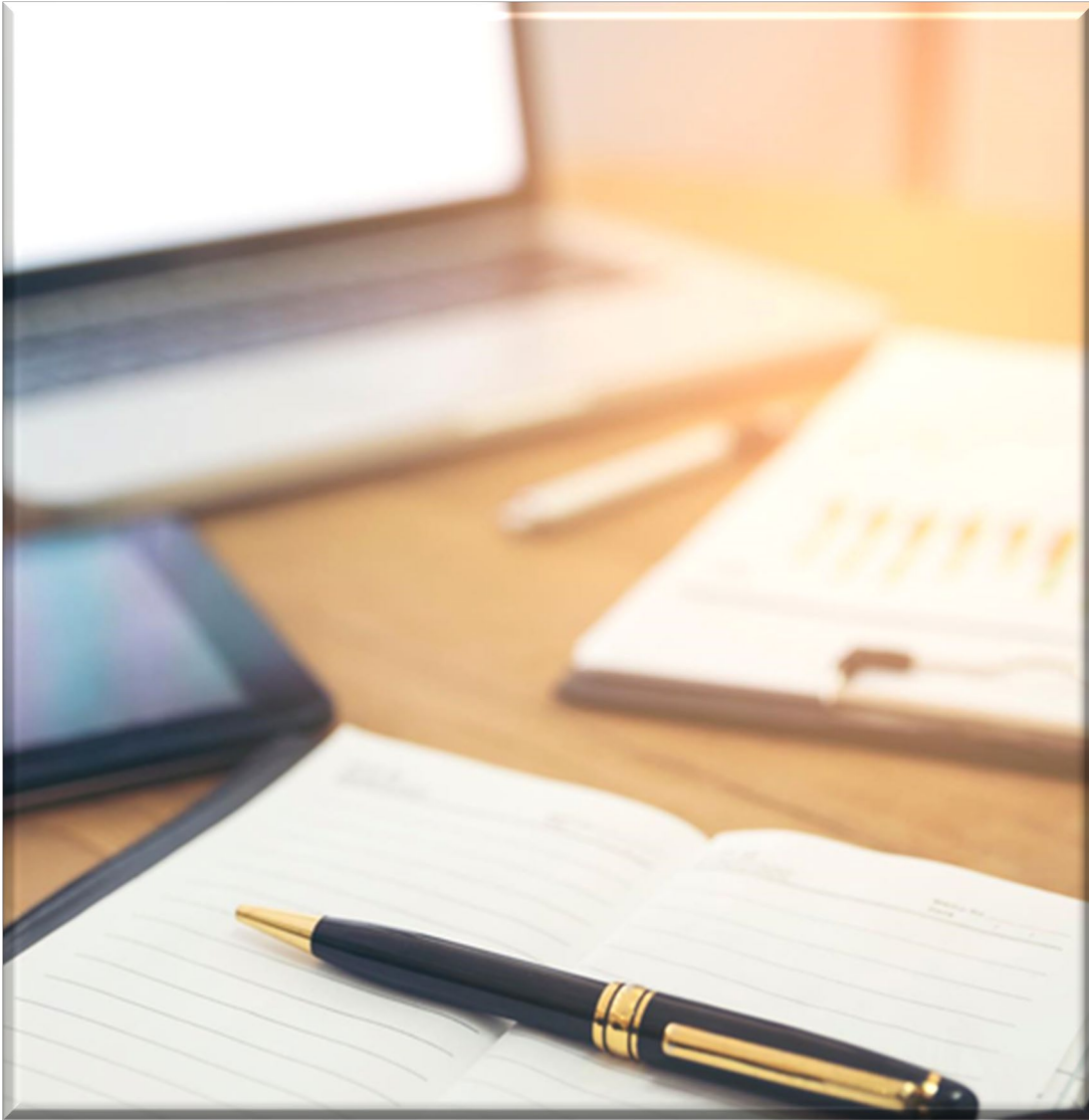
Virtual
e-Learning/Webinar
In Person
Internal Only

Group Care Transition Planning Group

These are the main areas that we know the new WAC will affect in terms of impacts on your work:

- Facility Policy and Procedures
- Facility / Staffing
- New Licenses / Current Licenses
- Renewal Licenses / Expiring Licenses
- Licensing Investigations





Q&A

Question:

How can we support our providers during this transition?

For group care field practice or program related questions, email dcyf.groupcarequestions@dcyf.wa.gov.



Washington State Department of
CHILDREN, YOUTH & FAMILIES

Thank you!

