

Caregiver Supports Project

Project Update Presentation

February 29, 2024

www.dcyf.wa.gov



Washington State Department of
CHILDREN, YOUTH & FAMILIES

Welcome

- **Caregiver Supports Project:** Implement a continuum of placement resources that enable safe, stable, and supported placements for children and youth in foster care.
- Part of the [Thriving Families campaign](#).
- Today's presentation:
 - Phase II Overview
 - Catchment Areas
 - Timeline for rollout



Caregiver Supports Model

Project Website: <https://www.dcyf.wa.gov/services/foster-parenting/caregiver-supports-project>

	LEVEL 1	LEVEL 2	LEVEL 3	LEVEL 4	LEVEL 5	LEVEL 6	LEVEL 7
New Support Levels	Basic Maintenance Foster Care	Support Needs: Adolescent Low Needs	Support Needs: Chronic Physical Health	Support Needs: Developmental Disability	Support Needs: Developmental Disability & Chronic Physical Health	Support Needs: Moderate Mental Health	Support Needs: Complex Mental Health
Placement Supports for Licensed and Unlicensed Caregivers – includes Case Aides for levels 3-7							
Rates for Caregiver Support Levels Based on Age (Licensed Caregivers) – <i>Level Rates include Basic</i>							
Age: 0-5	\$722	N/A	\$1,407	\$1,749.50	\$2,092	\$2,434.50	\$2,777
Age: 6-11	\$846	N/A	\$1,531	\$1,873.50	\$2,216	\$2,558.50	\$2,901
Age: 12+	\$860	\$1,202.50	\$1,545	\$1,887.50	\$2,230	\$2,572.50	\$2,915

Placement Supports - Caregiver Supports Contract

- Placement Supports under the Caregiver Supports Contract will be available to all caregivers, licensed and unlicensed
- Support areas include accessing resources such as education advocacy, health and well-being coordination, finding local child care, culturally and developmentally appropriate care, transition to adulthood, and crisis supports
- The caregiver support level determination, level 1-7, made by DCYF or a Tribe will set the level of service for Placement Supports provided by the contractor
 - There are two type of support services, Basic (level 1-3) and Enhanced (level 4-7)
 - Please watch the January 2024 project update presentation on the website for details about the caregiver support level determination process
- Case Aide hours for Levels 3-7 are pre-authorized up to a certain amount. Additional hours can be approved through special request

Authorized hours of Service Per month, per level, per child/youth	
Support Services Lvl 3	9
Support Services Lvl 4	12
Support Services Lvl 5	15
Support Services Lvl 6	17
Support Services Lvl 7	20



Basic Support Services – Caregiver Supports Contract

Basic Support (level 1-3) plan would include the following support to caregivers:

- Assistance coordinating educational advocacy for school aged children
- Assistance coordinating health and dental services
- Assistance identifying and accessing childcare
- Parenting skills – providing as requested, resources and skills training to support the caregiver in safely and supportively parenting the children and youth in their care
- Assistance in accessing/providing culturally relevant services to each child
- Assistance with transition to adulthood planning/independent living skills
- Assist with crisis support service that include twenty-four/seven (24/7) crisis phone support and coaching



Enhanced Support Services – Caregiver Supports Contract

Enhanced Support (level 4-7) plan would include the following support to caregivers:

- All services provided through basic support level 1-3 (previous slide)
- Additional services assisting with crisis support services. This shall include, but is not limited to:
 - Twenty-four/seven (24/7) crisis planning that includes after hours availability that include:
 - Phone coaching and assistance; and
 - In-person coaching, and assistance as needed
- Assisting the caregiver to locate and schedule appropriate respite care for each youth
- Assistance with creating and implementing support plans as necessary for youth and caregivers
- Assistance with coordinating case aide supports as needed

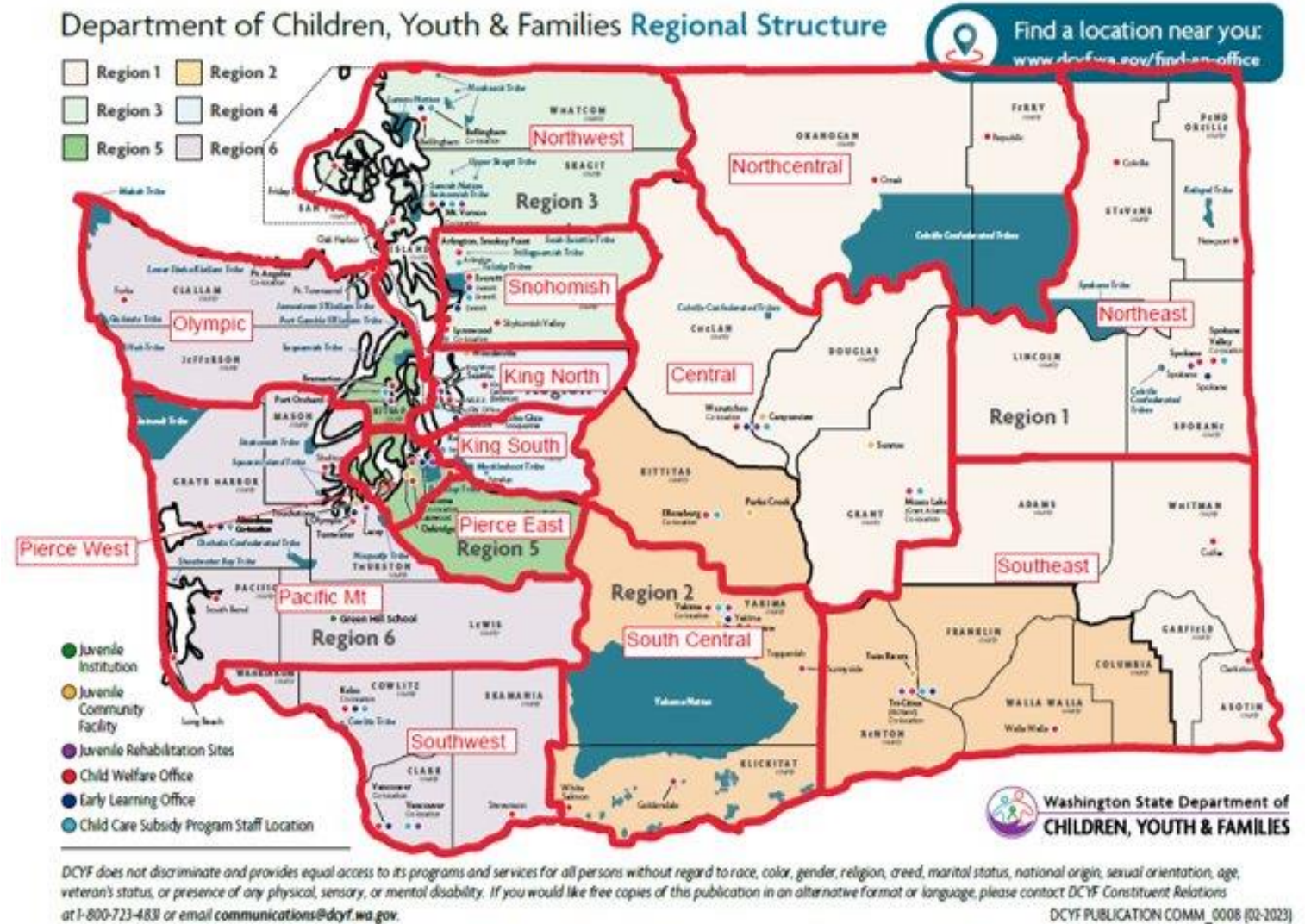


Caregiver Supports Catchment Areas

Contracts will be in place to serve geographic catchment areas

Counties by Catchment Area

- *Northeast:* Pend Oreille, Lincoln, Spokane, Stevens
- *South Central:* Klickitat, Yakima
- *Pacific Mountain:* Lewis, Pacific, Grays Harbor, Mason, Thurston
- *Southeast:* Adams, Whitman, Garfield, Asotin, Columbia, Walla Walla, Franklin, Benton
- *North Central:* Okanogan, Ferry
- *Central:* Grant, Kittitas, Chelan, Douglas
- *Southwest:* Wahkiakum, Cowlitz, Skamania, Clark
- *Olympic:* Jefferson, Clallam, Kitsap
- *Pierce East:* Pierce
- *Pierce West:* Pierce
- *Snohomish:* Snohomish
- *Northwest:* Skagit, Whatcom, Island, San Juan
- *King North:* King
- *King South:* King



Caregiver Supports Contract Rollout Guiding Principles

Placement Supports will not be available statewide all at once, they will rollout on a schedule by catchment area starting in July 2024 with the final contracts being executed in mid 2026

- Tribes have options to serve their own Tribal-jurisdiction children and youth
- The rollout order of catchment areas was determine by the following:
 - Areas with higher placement instability
 - Areas with higher percentage of kinship placements
 - Provider / Service capacity
 - Funding capacity as allocated by Leg

Order	Catchment Area
1	Southwest
2	South Central
3&4	King North & South
5	Northeast
6	Snohomish
7&8	Pierce East & West
9	Southeast
10	Pacific Mountain
11	Central
12	Northwest
13	Olympic
14	North Central

Caregiver Supports Contract Rollout Timeline – First 8 Catchment Areas

Order	Catchment Area	Approximate Date of Contract Execution
1	Southwest	July 1st, 2024
2	South Central	
3	King North	October 1st, 2024
4	King South	
5	Northeast	January 1st, 2025
6	Snohomish	
7	Pierce East	April 1st, 2025
8	Pierce West	April 1st, 2025



Caregiver Supports Rates – Reimbursement Rates

MONTHLY REGIONALIZED PAYMENTS Per Child Served				
LEVEL	Zone 1	Zone 2	Zone 3	Zone 4
1	\$495	\$529	\$508	\$564
2	\$532	\$569	\$547	\$607
3	\$577	\$616	\$592	\$657
4	\$631	\$673	\$648	\$718
5	\$782	\$834	\$803	\$890
6	\$833	\$889	\$855	\$948
7	\$961	\$1,025	\$987	\$1,093
HOURLY CASE AIDE RATES (level 3-7)				
	\$55.78	\$57.84	\$56.72	\$62.68

Authorized hours of Service Per month,
per level, per child/youth

Support Services Lvl 3	9
Support Services Lvl 4	12
Support Services Lvl 5	15
Support Services Lvl 6	17
Support Services Lvl 7	20

Case aide rates include
employee recruitment,
retention, ongoing training and
staffing costs

Zone	Catchment Areas	Counties	Tribes	
1	Northeast South Central	Lincoln Pend Oreille Spokane Stevens Klickitat Yakima	Nooksack Tribe Lummi Nation Upper Skagit Tribes Kalispel Colville Spokane Yakama Nation	
2	Pacific Mountain Southeast North Central Central	Chelan Douglas Grant Kittitas Ferry Okanogan Asotin Benton Harbor	Thurston Columbia Franklin Garfield Walla Adams Whitman Lewis Mason Pacific Grays	Quinalt Tribe Nisqually Chehalis Confederated Tribe Squaxin Island Skokomish Tribe Shoalwater Bay Colville Confederated Tribe
3	Southwest Olympic Pierce East Pierce West Snohomish Northwest	Island San Juan Skagit Whatcom Clallam Jefferson Snohomish Wahkiakum	Clark Cowlitz Skamania Pierce Kitsap Tulalip Hoh Puyallup Jamestown S'Klallam Quileute Port Gamble-S'Klallam Suquamish Stillaguamish Sauk-Suiattle	
4	King North and South	King	Muckleshoot Snoqualmie	

Procurement

- Request for Proposal (RFP) posted on WEBS January 18, 2024 for catchment areas 1-8
 - Register for WEBS at <https://pr-webs-vendor.des.wa.gov/>
 - If you have technical difficulties or need assistance registering, please email webcustomerservice@des.wa.gov
 - WEBS User Guide:
<https://des.wa.gov/sites/default/files/public/documents/ContractingPurchasing/WEBS/WEBS-VendorManual.pdf?cb0a8>
- A second procurement will be posted in January 2025 for catchment areas 9-14

Tribal Engagement

- In partnership with Tribes, DCYF will develop a Tribal-specific Caregiver Supports Agreement that Tribes may opt to enter into with DCYF
- There will be roundtable discussions for Phase 2 including the development of the Tribal-specific Caregiver Supports Agreement
 - Tuesday March 19 2-4pm
 - Wednesday March 20 10am-12pm
- Please contact Mandy Morlin (mandy.morlin@dcyf.wa.gov) with any questions about Caregiver Supports or to request a meeting with DCYF to learn more



Thank you!

Please send all questions and comments to: DCYF.CaregiverSupports@dcyf.wa.gov

